



PINO LEAK PES
NO LEAK BETWEEN THE PIPES

**DISCOVER WHAT
SET US APART
FROM THE REST**

PIPE JOINING SYSTEM



FIRE PROTECTIONS



INDUSTRIAL SUPPLY

COMPANY PROFILE

PINOLEAKPES, read as “No Leak Between The Pipes” as the phrase “NO LEAK” is between the word “PIPES”.

The company’s business is mainly about supplying mechanical fittings and valves that are usually installed between the pipes. The word “NO LEAK” also implies “QUALITY” and “ASSURANCE” for customers that there would be no leakage on their pipeline if they’ll use PINOLEAKPES products.

Though, the name of the organization may appear as new, yet, it has been in business since 2015 and has already served 12,000 purchase orders just in three years of its inception.

PINOLEAKPES is a distributor of products for pipe joining systems and mechanical supplies, fire protections and HVAC-R driven to provide efficient and low price items.

We have been in the business since 2013 formerly “BETWEEN the PIPES ENTERPRISES” maintaining an excellent track record of service and meeting the customers’ requirement for quality.



PINOLEAKPES Corporate Office

89 Anahaw St., Veterans Village
Quezon City, Metro Manila

MISSION

Our mission is to supply the highest quality products to customers with unmatched level of customer service.

VISION

To be the leading provider of mechanical supplies and fire protection products in the Philippines.

GOAL

- Do what is right, even when that is the hardest thing to do.
- Support the people around us.
- Provide transparency.
- Work passionately and joyfully.
- Show respect to people.





PINOLEAKPES always adhere to the philosophy of survival from quality and development from technology by carrying out overall quality control.

The commitment to provide customers with outstanding and continuously upgraded products and services by superior equipment, reasonable design, professional production, quality concept stressing equally on appearance and interiority, the service awareness of customers foremost, as well as competitive cost.

TABLE OF CONTENTS

- 1 Grooving System
- 3 Fire Protection
- 8 Water System
- 10 Black Iron Fittings
- 11 Malleable Fittings
- 11 Steel Flanges
- 12 Stainless Steel Valves
- 13 Bronze and Brass Valves
- 14 PP-R and HDPE
- 15 Gauges
- 16 Major Clients

GROOVING SYSTEM



LUYUAN (LY) EDGE

Besides those mentioned above, it has the following specialized features only found in Luyuan (LY) Grooved Fittings :

- Advance German Technology
- Uses EPDM gasket for higher temperature tolerance
- Uses premium raw materials
- Heavyweight and durable
- Surpasses quality standards set up by regulating institutions

LUYUAN (LY) LASTING

LY Grooved Fittings was introduced to bring our fire protection up a notch. With our new technology, welding of pipes will be a thing of the past with its numerous disadvantages. LY Fittings will bring ease of installation with lower labor cost. At the same time, LY fittings are engineered to take into account environmental factors such as seismic and thermal movements so that any project stakeholder will have their peace of mind with LY fittings being installed in their sites. It is a wise choice too.

EUROPEAN DESIGN AND QUALITY

LY fittings are made with *Disa* machines which are considered the most advance when it comes to casting technology. Because of this, LY has achieved UL and FM approvals aside from surpassing international standards such as ISO, ANSI, among others. These certifications show why LY fittings is a cut above the rest.



STAINLESS STEEL COUPLING

PASS pipe system solution can meet the requirements of a special environment (high pressure, corrosion, earthquake, etc.), achieve safer system installation, lower maintenance cost, reduce noise and vibration.



Piping.Systems.Solutions.

PASS is the world's leading manufacturer of pipe connecting solutions in the field of water treatment. Through its innovative technology and service, PASS unremittingly provides more cost effective products and service with innovative solutions for global customers according to industry development.

PASS grooved couplings, grooved fittings and pipe connectors are applied in different fields to help customers lower the cost, accelerate construction progress and guarantee safety and reliability of the project. PASS products have already been applied in more than 100 countries, ensuring the reliable operation of water treatment system at a level of over 100,000 tons per day.



The *Model 77C* is designed for high pressure applications including RO and desalination systems. The 77C is available in strong and anti-corrosive alloys of 304, 316, 316L Stainless steel.

SIZES: 3/4" to 12" (DN20 to DN300)

Working Pressure: 1200psi (83bar) Sch40S, cut groove only

Minelock Collars for HDPE and PVC

SPECIFICATIONS:

Materials: QT450-10

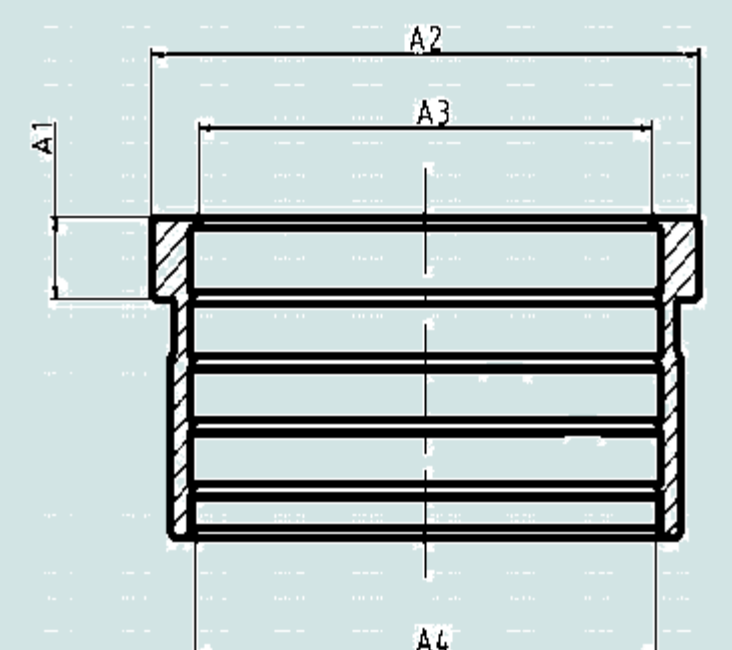
Tensile Strength: $\geq 450\text{MPa}$

Yield Strength: $\leq 310\text{MPa}$

Elongation: $\geq 12\%$



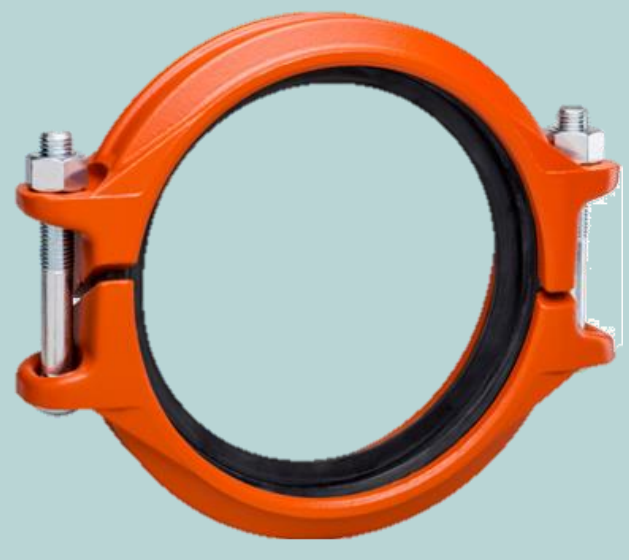
Cast Iron



DN	Dimensions(mm)			
	A1	A2	A3	A4
50	16	175	149.75	153.05
105	16	122	101.5	103.05
155	16	175	149.75	153.05
210	20.5	232	203.5	208
250	20.5	286	242	250.75

Applications:





RIGID COUPLING
STYLE 009N



FLEXIBLE COUPLING
STYLE 75

Victaulic is a global manufacturer of mechanical pipe joining methods (fittings & couplings), flow control and fire protection systems and is the inventor of the grooved pipe coupling. It build innovative technologies and provide engineering services that address complex piping challenges faced by engineers, contractors, distributors, site owners and property managers.

It's products are used in some of the world's most demanding markets and for some of the most challenging piping applications. Beyond being a product solutions provider, it aim to be a partner for the life of any build by offering service solutions to facilitate your project. It's systems, services and mechanical joining methods are engineered with confidence to put people to work faster while increasing job safety, ensuring reliability and maximizing efficiency.

GROOVED FITTINGS



- Standard fitting pressure ratings conform to ratings of installed coupling
- All fittings supplied with grooves or shoulders for fast installation



Eccentric Reducer



Equal Tee



Cross Tee



Coupling Reducer



End Cap



Concentric Reducer



Grooved Elbow 45°



Mechanical Tee Threaded Outlet



Mechanical Tee Threaded Outlet



Grooved Elbow 90°



Double



Single



GRV x THRD

GROOVED NIPPLE

Victaulic RG3210 ROLL GROOVING TOOL

Hydraulic-feed shop or field tool. Anti-flare roll grooving capability to control pipe end flare.



GROOVED VALVES



OS&Y GATE VALVE (GROOVED)

- Available as Groove x Groove or Groove x Flange*
- Used when positive shut-off is required in a fire line and a quick visual indicator of open/closed position is needed
- Sizes from 2½ – 12"; DN65 – DN300
- Pressures up to 250 psi; 1724 kPa | 17 bar

BUTTERFLY VALVE WITH SUPERVISORY SWITCH

- Weatherproof actuator housing approved for indoor or outdoor use
- Ductile iron body and disc with EPDM seats
- Sizes from 2 – 12" | DN50 – DN300
- Pressures up to 300 psi; 2068 kPa | 21 bar



CHECK VALVE (SERIES 717)

- Features an elastomer encapsulated disc with an electroless nickel plated seat
- Sizes from 2½ – 12" | DN65 – DN300
- Pressures up to 365 psi; 2517 kPa | 25 bar



ALARM CHECK VALVE (SERIES 715)

- Prevents the reverse flow of water from the system piping to the water supply
- Sizes from 1½ – 8"; 40 – 200 mm
- Pressures up to 300 psi; 2068 kPa | 21 bar





BUTTERFLY VALVE WITH SUPERVISORY SWITCH (GROOVED)

The butterfly valve is simple, with compact and 90° slewing crane structure, it's mainly used for low pressure pipeline with tamper switch.



CHECK VALVE (GROOVED)

The grooved resilient swing check valve is a one-way check valve. When the medium flows forward, the valve disc opens under the action of fluid pressure.

When the medium flows backward, the valve disc closes under spring elasticity and reverse fluid pressure, which cuts off the passage and prevents backflow.



OS&Y GATE VALVE (GROOVED)

The grooved resilient OS&Y gate valve is mainly used to connect and cut off the medium in the pipeline. The stem nut is on the bracket. When opening and closing the gate plate, the rotary stem nut is used to realize the rise and fall of the stem. The valve switch can be identified according to the lifting height of the stem.

WAFER CHECK VALVE (DOUBLE DOOR)

The double disc check valve is built with stainless trim to give years of trouble free operation. The double disc check valve can be installed in either horizontal or vertical pipelines that carry clean water or air.



HYFLO produces a high quality Zone control valves, serve as waterworks distribution systems and fire protection systems, their products meet or exceed all industry requirements. And most of products are UL & FM approved. HYFLO produce outside screw and Yoke gate valves, no rising stem valves, check valves, butterfly valves, Bronze angle valves, Siamese connection and test & drain.

PRESSURE RELIEF VALVE & PRESSURE SUSTAINING VALVE

The Hyflo Model 500 Pressure Sustaining/Relief Valve is a hydraulically operated, pilot-controlled, modulating valve designed to maintain constant upstream pressure within close limits. This valve can be used for pressure relief, pressure sustaining, back pressure, or unloading functions in a by-pass system.



ALARM CHECK VALVE



AIR RELEASE VALVE



SIGHT GLASS



SWING CHECK VALVE



OS&Y GATE VALVE



BUTTERFLY VALVE



FDAS (FIRE DETECTION & ALARM SYSTEMS)



ASENWARE is a fire alarm system and fire suppression system manufacturer and whole fire safety solution provider since 2005.

Driven by a commitment to sound operations, ongoing innovation, and open collaboration, we have established a competitive fire safety products line include addressable fire alarm system, conventional fire alarm system, central monitoring emergency light system, fire telephone and emergency audio system, fire pump, fire hose and gas suppression system.

12-32 ZONE CONVENTIONAL FIRE ALARM CONTROL PANEL (AW-CFP2166-12-32)

The AW-CFP2166 series 12-32 Zone conventional fire alarm panel is designed based on EN54 part 2 & 4 standard. And it is the central part of conventional fire alarm system, designed for applications requiring smoke detector, bell, manual pull stations, and sprinkler supervision. Each zone can be disabled by a button. The basic unit offers 1 to 8 zones of initiation, up to 16 zones for larger applications.

PRODUCT FEATURES

- 12-32 Zone Fire Alarm Control Panel Specification
- It is modularized design, the panel can expand from 1 zone to 32 zones easily
- It has 2 level control mode by a lock
- It has 24VDC and 5VDC power supply output.
- It has FIRE and FAULT signal output.
- It has 2 general sounders output.
- Each zone has 1 circuit detectors input.
- Each zone can be disabled by a button.
- It has RESET button to reset the panel.
- It has SILENCE button to stop BUZZER and SOUNDERS.
- It has EVACUATE button to start a manual fire alarm immediately
- It has battery low protection function, when battery voltage lower than 21VDC, battery will be cut off automatically until the mains power is on
- It has an optional GSM module for fire alarm by SMS



CONVENTIONAL SMOKE DETECTOR

AW-CSD311 is photo-electronic detector using a state-of-the-art optical sensing chamber.



CONVENTIONAL HEAT DETECTOR

AW-CTD382 is conventional photo-electronic heat detector uses a state of-the-art optical sensing chamber.



CONVENTIONAL FIRE STROBE SOUNDER

Fire Strobe Sounder is a kind of terminal device for alarm; it is used for the sound and light alarm when the fire happens.



CONVENTIONAL MANUAL CALL POINT

The AW-CMC2166-6 conventional manual call point designed for conventional fire alarm system for reporting fire or emergency condition by its PUSH IN/PULL DOWN handle latches.



CONVENTIONAL MANUAL BREAK GLASS CALL POINT

AW-CMC2166-1 Manual Call Point installed in public places.



Formed in 1984 to focus on the fire alarm systems market, today System Sensor is one of the largest manufacturers of fire detection and notification products in the world. A specialist in smoke detection technology that place a high premium on research and development. The result is a line of products that are reliable, sophisticated and designed for real-world applications.

OSY2 Supervisory Switch



The System Sensor OSY2 is used to monitor the open position of an Outside Screw and Yoke (OS&Y) type gate valve.

FEATURES

- NEMA 3R-rated enclosure
- User-friendly mounting bracket fits newer valve yokes
- Single side conduit entry does not require right angle fittings
- Adjustable length actuator eliminates the need for cutting the shaft
- Accommodates up to 12 AWG wire
- Three position switch monitors vandal and valve close signals
- Two SPDT contacts are enclosed in a durable terminal block for added strength
- 100 percent synchronization activates both alarm panel and local bell simultaneously

WFD Series Water Flow Detector



The System Sensor WFD series is compatible with schedule 10 through 40 steel pipe, sizes 2" through 8", and can be mounted in a vertical or horizontal position.

FEATURES

- Two-inch mounting hole provided in new WFD30-2 models
- UL-listed models are NEMA 4 rated
- Sealed retard mechanism immune to dust and other contaminants
- Visual switch activation
- Field-replaceable retard mechanism and SPDT switches
- Rugged, dual SPDT switches enclosed in a durable terminal block
- Accommodates up to 12 AWG wire
- Designed for both indoor and outdoor use
- 100 percent synchronization activates both alarm panel and local bell
- Tamper-resistant cover screws



ARCHITECTURAL/ENGINEERING SPECIFICATIONS

Model shall be model number OSY2 supervisory switch as manufactured by System Sensor. OSY2 shall be installed on each valve as designated on the drawings and/or as specified herein. Switches shall be mounted so as not to interfere with the normal operation of the valve and shall be adjusted to operate within two revolutions of the valve control or when the stem has moved no more than one-fifth of the distance from its normal position. The mechanism shall be contained in a weatherproof die cast metal housing that provides a side entrance for 1/2" conduit and incorporates the necessary facilities for attachment to the valve

A grounding provision is provided. The switch assembly shall include two switches each with a rated capacity of 10 Amp @125/250VAC and 2.5 Amp @ 24VDC.

The cover shall contain tamper-resistant screws for which a security wrench will be provided with each switch. The OSY2 shall be Underwriters Laboratories listed for indoor or outdoor use. The OSY2 shall be Factory Mutual, CSFM, and MEA approved.



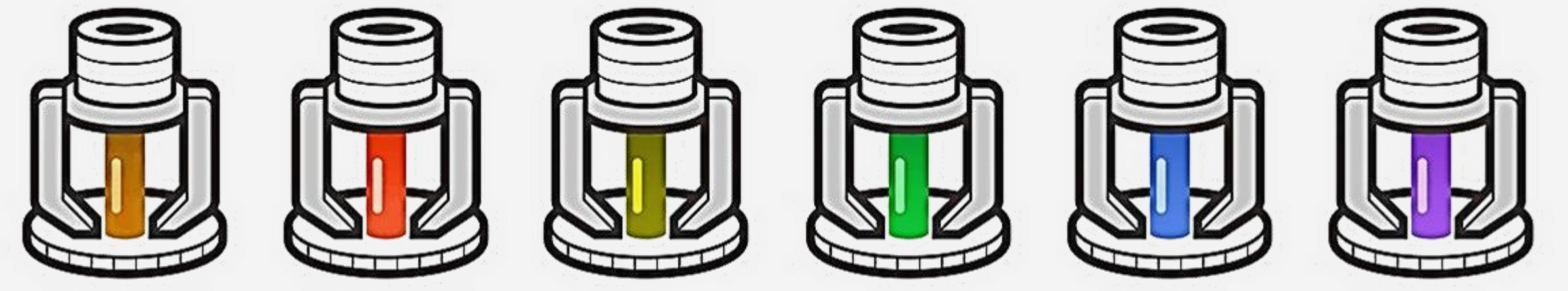
FIRE SPRINKLERS



PENDENT SIDEWALL UPRIGHT



SPECIAL USE SPRINKLERS



57°C 68°C 79°C 93°C 141°C 182°C



ALL BRASS CHROME+BRASS



ESCUTCHEON for SIDEWALL ESCUTCHEON for PENDENT Pendent Sprinkler with Escutcheon

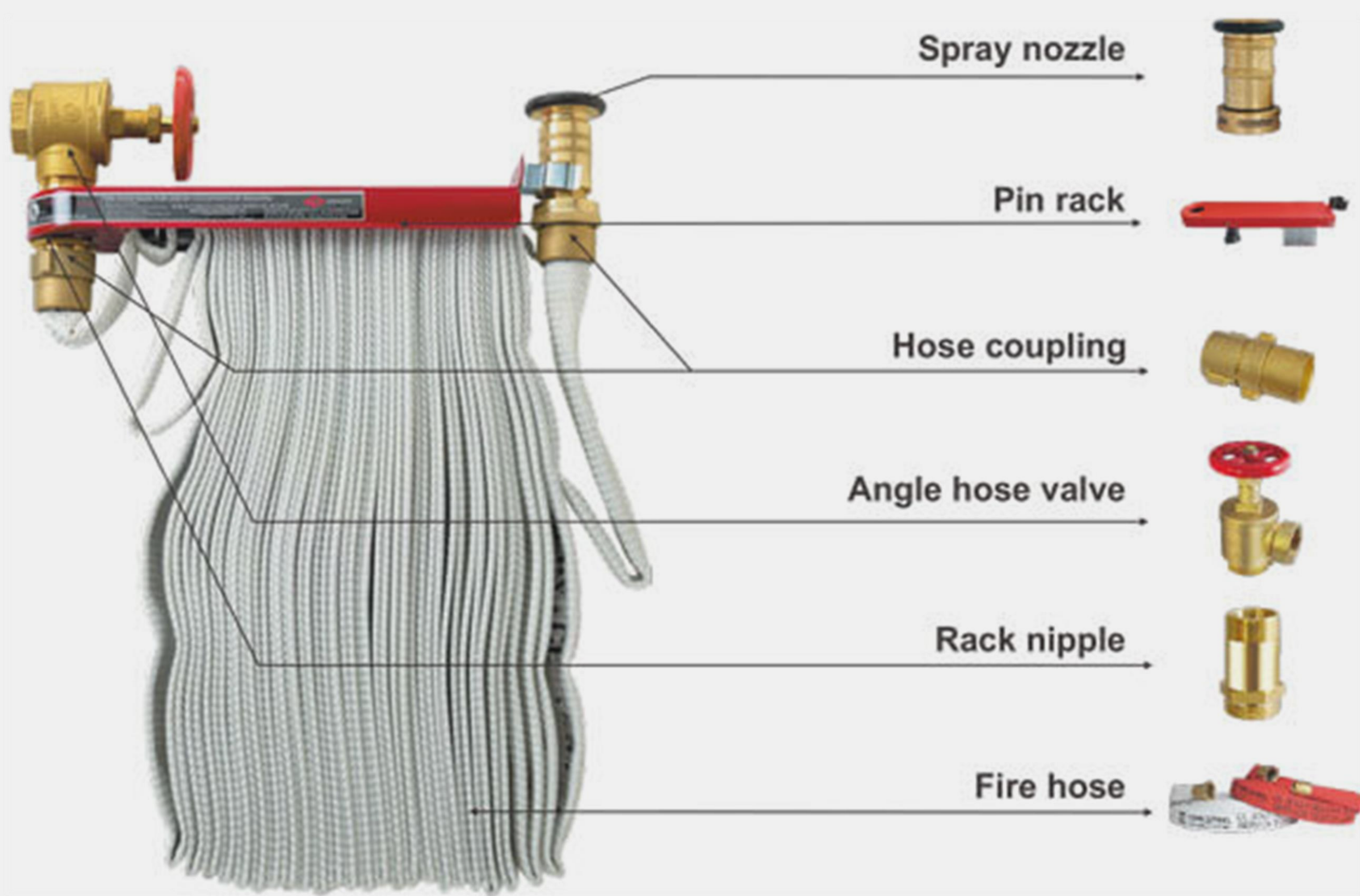


CONCEALED ESFR-25

FIRE HOSE CABINET



Specifications:
 Aluminum Frame
 Gauge #18
 Powder Coated
 Glass Front with lock and key
 24x27x7inches for 50ft Single Jacket / Double Jacket
 32x27x7inches for 100ft Single Jacket / Double Jacket
 Complete Accessories



FIRE EXTINGUISHER



ABC Fire Extinguishers use monoammonium phosphate, a dry chemical with the ability to quickly put out many different types of fires by smothering the flames. This pale, yellow powder can put out all three classes of fire:

- Class A** is for trash, wood, and paper.
- Class B** is for liquids and gases.
- Class C** is for energized electrical sources.

When applied to a hazard, AFFF produces an aqueous film that spreads across the surface of the fire to extinguish the flame. This film is what gives AFFF its name, and it works by suppressing flammable liquid vapor, effectively suffocating the fire hazard.



HCFC-123 is mainly used as a commercial and industrial refrigerant and often as a heat-transfer fluid, foam-blowing agent, or solvent. It is classified as a **fire extinguishing** agent through cooling and dilution.



Giacomini are used throughout the world by contractors specialized in fire protection systems, to guarantee top class systems, reduced installation times and innovative technical solutions.

It's components are used in fire protection systems all over the world, in civilian airports, hotels, hospitals, high-rise buildings, shopping centers and, in general, wherever there are commercial buildings.

The most important international regulations (UL, FM), not forgetting the type-approval from the most demanding Fire Departments,, bear witness to the technological supremacy of our solutions for traditional systems using water.

300 PSI rated pressure



A53
GATE VALVE

FEMALE x MALE hose connection

Polished Brass
Rough Chrome
Polished Chrome

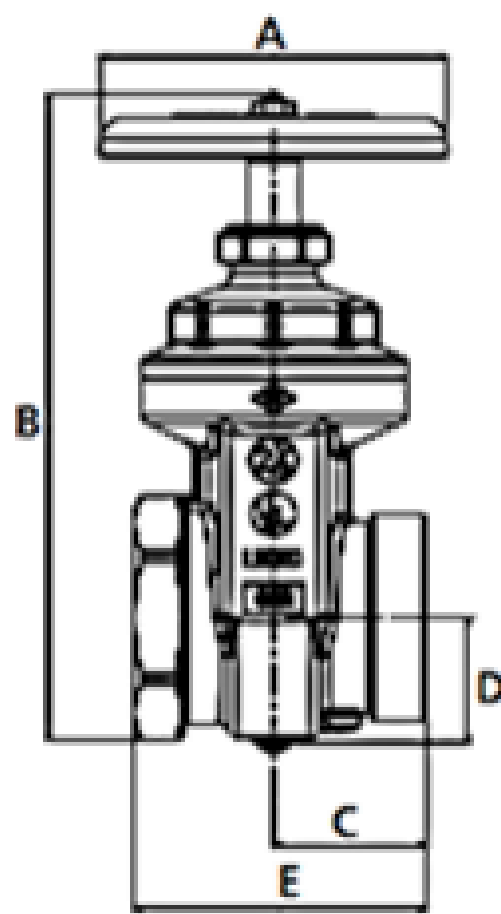




Straightway pattern, non-rising stem, 300 lbs. hose gate valves are intended for use on standpipes, fire pumps and hydrants.

Standard Equipment:

Female NPT inlet x male hose thread outlet, forged brass with red hand wheel, solid wedge disc with tapered seats. Available without cap and chain.



SIZE (a x b)	CERTIFICATIONS	A	B	C	D	E
2 1/2" x 2 1/2"	FM APPROVED LISTED 618R, UL LISTED 618R	5 1/8"	9 13/16"	2 1/4"	2 1/16"	4 11/32"
3" x 2 1/2"	FM APPROVED	5 1/8"	9 15/16"	2 1/4"	2 3/16"	4 17/32"

300 PSI rated pressure



A95
EXPOSED FIRE DEPT. INLET CONNECTION

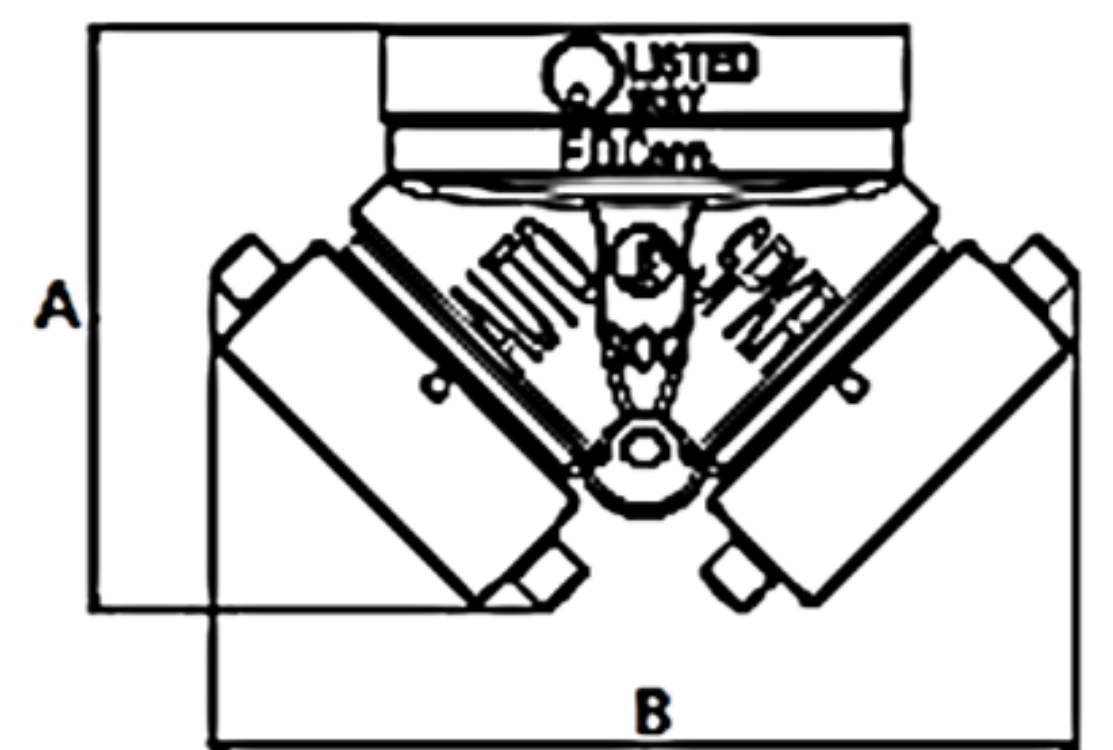
Two way-single clapper-back

Branding: "AUTO SPKR"

Used as an auxiliary inlet connection providing 500 GPM minimum to supplement the fire protection water supply. Swing clapper provides full waterway. Exposed design provides an economical method of satisfying Fire Dept. inlet requirements.

Standard Equipment:

Cast brass two-way inlet body with single swing clapper and pin or rocker lug hose thread swivel; straight NPT outlet connection.



SIZE (a x b)	CERTIFICATIONS	A	B
4" x 2 1/2"	FM APPROVED 300 PSI, UL LISTED 166Y 300 PSI, ULC LISTED 166Y 300 PSI	5 33/64"	8 5/64"

300 PSI rated pressure



A65
HOSE RACK MOUNTING NIPPLE

MALE x MALE hose thread

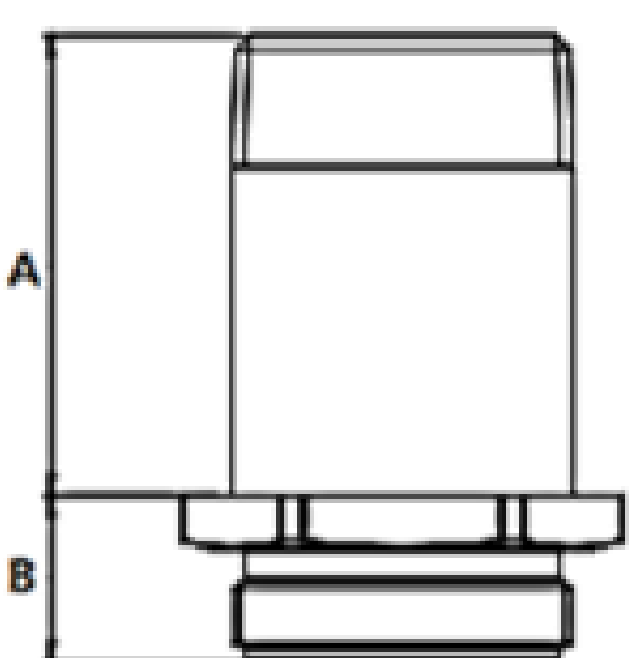
Polished Brass
Rough Chrome




Used to support hose rack from valve and adapt pipe thread to hose thread.

Standard equipment:

Forged brass finish valve with male NPT inlet x male hose thread outlet



SIZE (a x b)	A	B
1 1/2" x 1 1/2"	2 9/16"	5 9/64"
2 1/2" x 2 1/2"	3 7/64"	1 11/32"

100 PSI rated pressure



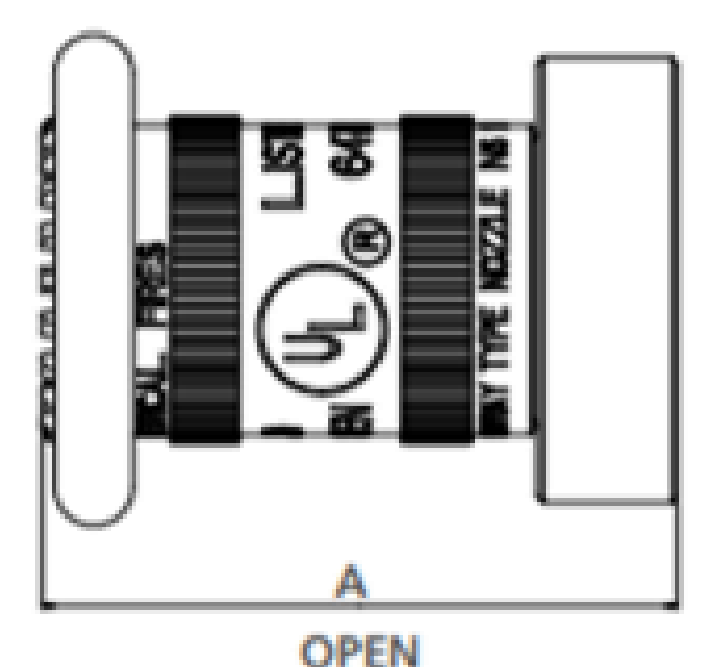
A7B
ADJUSTABLE FOG NOZZLE WITH RUBBER BUMPER

Rough Chrome



For industrial application.

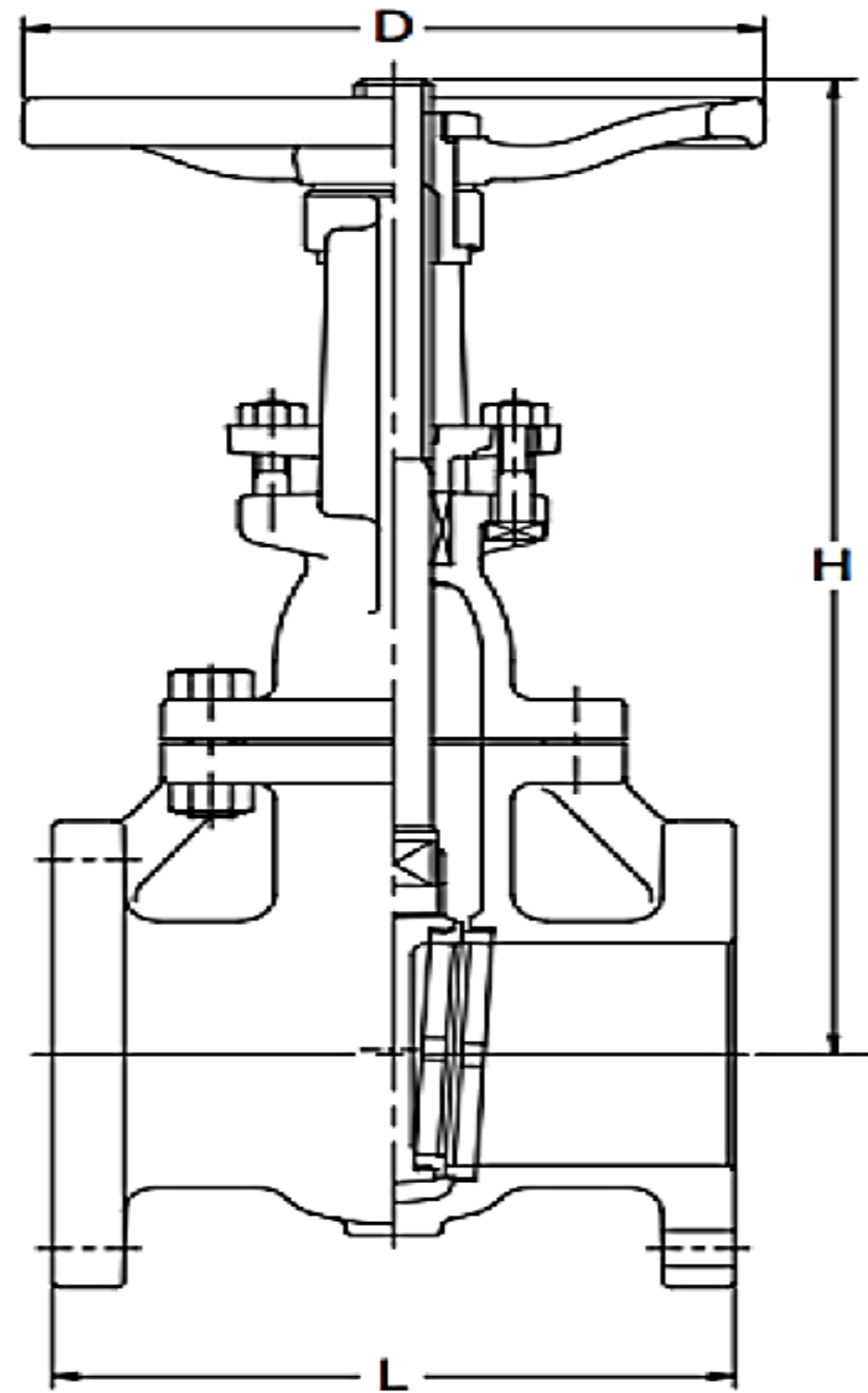
Standard equipment: Forged brass finish nozzle with adjustment from full fog to shut-off.



SIZE	CERTIFICATIONS	A
1 1/2"	FM APPROVED LISTED 97X7, ULC LISTED 97X7 647X	3 13/16"
2 1/2"	UL LISTED 647X, ULC LISTED 647X 647X	5 9/16"

DAYO VALVES

DAYO VALVES COMPANY LTD. - JAPAN



OS&Y GATE VALVE (RISING STEM)

CLASS 125 | 200 WOG
 FLANGED TYPE
 HYDROSTATICS PRESSURE: 125 PSI (NON-SHOCK)
 SHELL TEST: 300 PSI
 SEAT TEST: 200 PSI

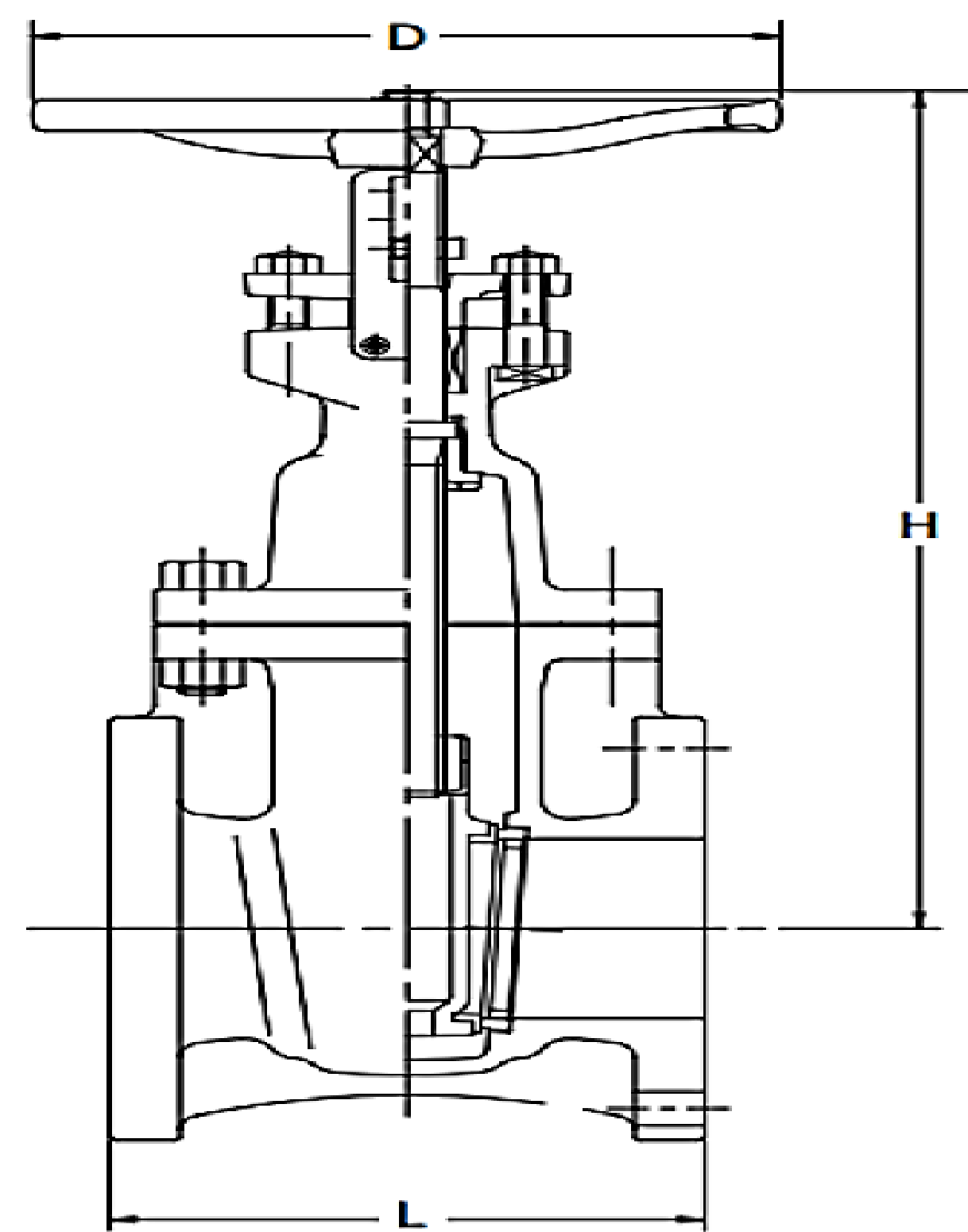
PARTS	MATERIAL	ASTM SPECIFICATIONS
BODY:	CAST IRON	A126 CLASS B
BONNET:	CAST IRON	A126 CLASS B
STEM:	BRASS	A276 TYPE 403
DISC:	CAST IRON	B62
SEAT RING:	BRONZE	B62
GLAND:	DUCTILE IRON	
PACKING:	NON-ASBESTOS	
GASKET:	NON-ASBESTOS	
GLAND BOLTS/NUTS:	CARBON STEEL	
BONNET BOLTS/NUTS:	CARBON STEEL	
YOKE SLEEVE:	BRONZE	
HANDWHEEL:	DUCTILE IRON	

SIZE in mm	1½" (40mm)	2" (50mm)	2½" (65mm)	3" (80mm)	4" (100mm)	5" (125mm)	6" (150mm)	8" (200mm)	10" (250mm)	12" (300mm)	14" (350mm)
L	165	178	190	200	228	250	267	292	330	354	383
H	240	267	280	300	405	460	560	705	880	1100	1270
D	127	152	178	190	229	254	279	343	406	483	533

NRS GATE VALVE (NON-RISING STEM)

CLASS 125 | 200 WOG
 FLANGED TYPE
 HYDROSTATICS PRESSURE: 125 PSI (NON-SHOCK)
 SHELL TEST: 300 PSI
 SEAT TEST: 200 PSI

PARTS	MATERIAL	ASTM SPECIFICATIONS
BODY:	CAST IRON	A126 CLASS B
BONNET:	CAST IRON	A126 CLASS B
STEM:	BRASS	A276 TYPE 403
DISC:	CAST IRON	B62
SEAT RING:	BRONZE	B62
GLAND:	DUCTILE IRON	
PACKING:	NON-ASBESTOS	
GASKET:	NON-ASBESTOS	
GLAND BOLTS/NUTS:	CARBON STEEL	
YOKE SLEEVE:	BRONZE	
HANDWHEEL:	DUCTILE IRON	

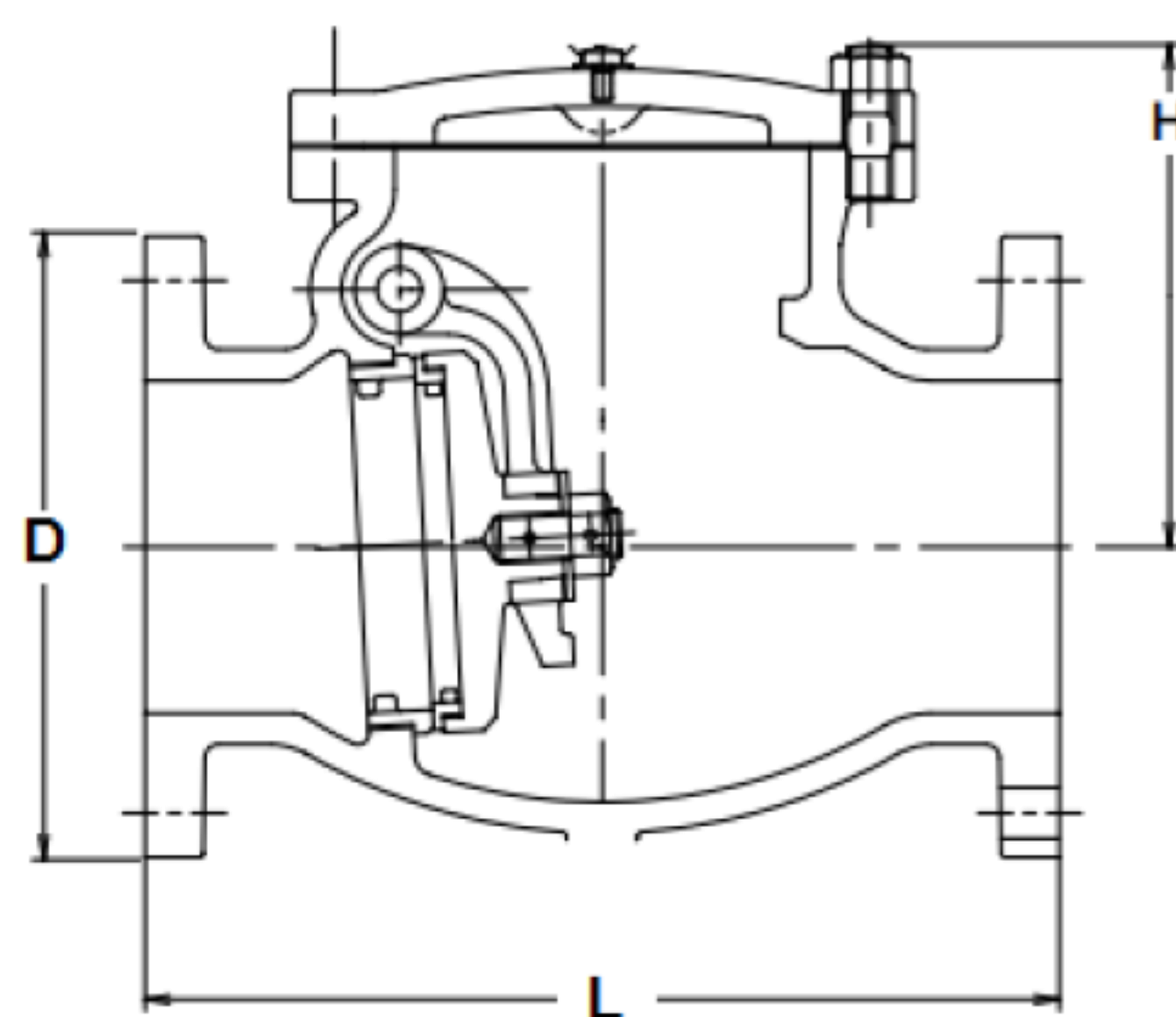


SIZE in mm	1½" (40mm)	2" (50mm)	2½" (65mm)	3" (80mm)	4" (100mm)	5" (125mm)	6" (150mm)	8" (200mm)	10" (250mm)	12" (300mm)	14" (350mm)
L	165	178	190	200	228	250	267	292	330	354	383
H	240	267	280	300	405	460	560	705	880	1100	1270
D	127	152	178	190	229	254	279	343	406	483	533

SWING CHECK VALVE

CLASS 125 | 200 WOG
 FLANGED TYPE
 HYDROSTATICS PRESSURE: 125 PSI (NON-SHOCK)
 SHELL TEST: 300 PSI
 SEAT TEST: 200 PSI

PARTS	MATERIAL	ASTM SPECIFICATIONS
BODY:	CAST IRON	A126 CLASS B
COVER:	CAST IRON	A126 CLASS B
HINGE PIN:	SS304	A276 TYPE 403
DISC:	CAST IRON	A126 CLASS B
SEAT RING:	BRONZE	B62
BODY SEAT RING:	BRONZE	B62
ARM:	NON-ASBESTOS	
GASKET:	NON-ASBESTOS	
GLAND BOLTS/NUTS:	CARBON STEEL	



SIZE in mm	1½" (40mm)	2" (50mm)	2½" (65mm)	3" (80mm)	4" (100mm)	5" (125mm)	6460" (150mm)	8" (200mm)	10" (250mm)	12" (300mm)	14" (350mm)
L	165	178	190	200	228	250	267	292	330	354	383
H	220	252	270	290	365	420	455	575	686	782	910
D	127	152	178	190	229	254	279	343	406	483	533

WYE STRAINER



The strainer mainly removes impurities in the medium through the filter to prevent particulate impurities from entering the passage and causing wall plugs to protect the fittings on the equipment pipeline from wear and blockage.

NOMINAL SIZE	DESIGN STANDARD	CONNECTION STANDARD	WORKING PRESSURE
2"(DN50) to 16"(DN400)	ASME B16.42	ASME B16.1 CLASS 125	200PSI to 300PSI

Application: The American standard flanged strainer is mainly applied in the waterworks system, working temperature is from 0°C to 100°C for rubber gasket and from -10°C to 200°C for graphite gasket.



GEAR TYPE



LEVER TYPE

BUTTERFLY VALVE

The butterfly valve is simple, compact, 90° slewing crane structure regulator valve, can be used for low pressure pipeline.

Application: The ANSI wafer butterfly valve is mainly applied at the waterworks system, the working temperature is 0°C-80°C.

Top Flange Standard: ISO 5211

NOMINAL SIZE	DESIGN STANDARD	CONNECTION STANDARD	WORKING PRESSURE
1.5"(DN40) to 32"(DN800)	MSS SP-67	ASME B16.1 CLASS 150 ASME B16.1 CLASS 125	175PSI to 300PSI

UNIVERSAL SILENT CHECK VALVE

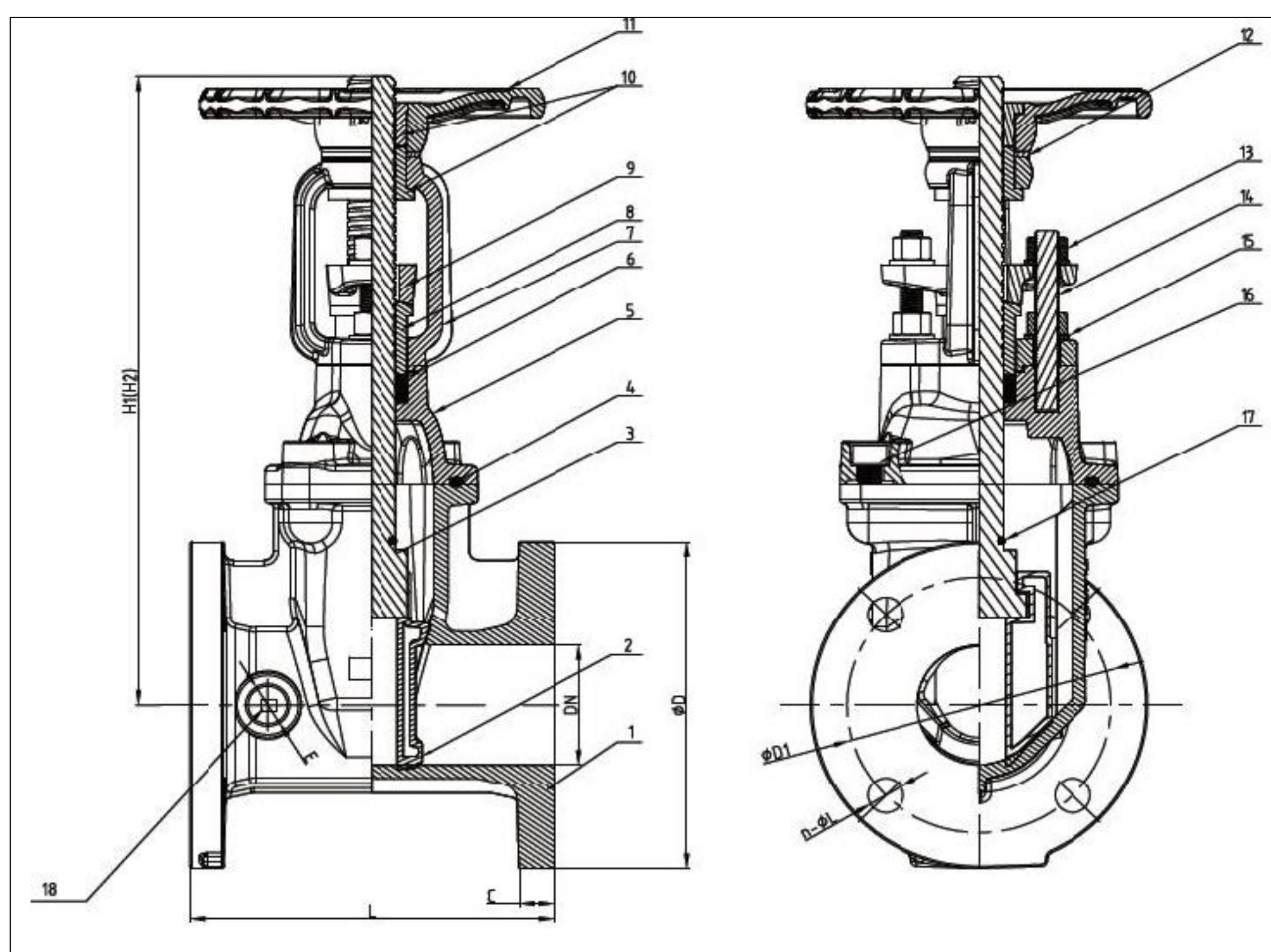


Prevent the pump and drive motor from reversing and the discharge of the container media. The valve for preventing the backflow of the medium.

NOMINAL SIZE	DESIGN STANDARD	CONNECTION STANDARD	WORKING PRESSURE
2"(DN50) to 12"(DN300)	MSS SP-67	ASME B16.1 CLASS 125	300PSI

AWWA C515 FLANGED RESILIENT OS&Y GATE VALVE

The AWWA C515 OS&Y gate valve is mainly used to connect and cut off the medium in the pipeline. The stem nut is on the bracket. When opening and closing the gate plate, the rotary stem nut is used to realize the rise and fall of the stem. The valve switch can be identified according to the lifting height of the stem.



PART NO.	PART	STANDARD SPECIFICATION
1	Valve Body	ASTM A536, 65-45-12
2	Resilient Wedge Disc	ASTM A536,65-45-12 + EPDM
3	Stem	AISI 420
4	Bonnet Gasket	EPDM
5	Bonnet	ASTM A536,65-45-12
6	Sealing Packing	EPDM
7	Yoke	EN-GJS-450-10
8	Stem Bushing	BRASS HPB59-1
9	Gland	EN-GJS-450-10
10	Stem Nut	BRASS HPB59-1
11	Hand Wheel	EN-GJS-450-10
12	Washer	BRASS HPB59-1
13	Gland Nut	CARBON STEEL ZINC PLATED
14	Stud	CARBON STEEL ZINC PLATED
15	Flat Washer	CARBON STEEL ZINC PLATED
16	Nut	CARBON STEEL ZINC PLATED
17	O-Ring	CARBON STEEL ZINC PLATED
18	NPT Pipe Plug	ASTM B62 C83600

BLACK IRON FITTINGS



ASME B16.11 THREADED | CARBON STEEL ASTM A105N | 3000 LBS

Some ASTM specifications like ASTM A105, also take into consideration normalized products. In such cases, the ASTM makes note of this detail by the use of the letter N next to the specification number. Hence, ASTM A105N is a specification that is intended for normalized products. Using a heat treatment like normalizing on **ASTM A105N Fittings** eliminates impurities in the form of manganese or phosphorus or silicon from carbon steels in addition to escalating the properties like its strength and hardness. During normalizing, there is a changing the size of the grain of carbon steel. This change, in turn, ensures a more uniform microstructure completely in the **SA-105 Normalized Fittings**.

Moreover, the residual stresses are also reduced with heat treatments. Normalizing also aids in making the alloy of **Carbon Steel A105N Pipe Fittings** more formable and machinable. Apart from being used at ambient temperature settings, buyers prefer using the **ASTM A105N Forged Fittings** at elevated temperatures as well. The higher contents of carbon in the steel improve its performance at elevated temperatures. Characteristically, most carbon steels exhibit little, to no corrosion resistance properties at all. The lack of other elements for alloying the carbon steel **ASTM A105N Forged Fittings** is also what makes them very inexpensive and affordable. However, as a solution to improve its corrosion resistance properties, treatment with hot dip galvanization produces good zinc coated **Carbon Steel A105N Galvanized Fittings**.

ASTM A234, SCH40 & SCH80 BUTT WELD

ASTM A234 covers wrought carbon steel and alloy steel fittings of seamless and welded construction covered by the latest revision of ASME B16.9, B16.11, MSS-SP-79, MSS-SP-83, MSS-SP-95, and MSS-SP-97. These fittings are for use in pressure piping and in pressure vessel fabrication for service at moderate and elevated temperatures.

ASTM **A234** is standard of the pipe fitting material. However, this is indicating the properties of the material of various kinds of alloy steel and carbon steel. **WPB** is a steel grade in which W stands for weldable, B is grading B and P stands for pressure. Thus it is referring minimum yield strength.



MALLEABLE FITTINGS & STEEL FLANGES



MALLEABLE IRON FITTINGS



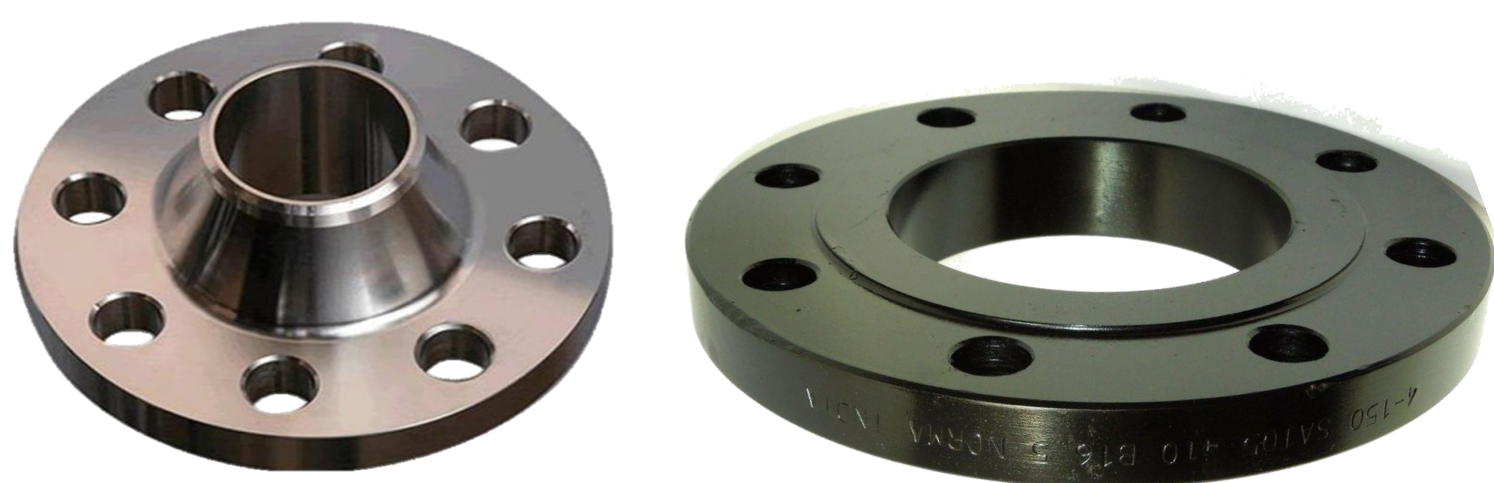
Malleable fittings are stocked in both black and galvanized and available in 150lb and 300lb pressure class.

- ASTM A197 Malleable Iron Material
- Galvanized fittings conform to ASTM A153
- Dimensions conform to ASME B16.3
- Unions conform to ASME B16.39
- Bushings, Plugs and Locknuts conform to ASME B16.14
- NPT threads conform to ANSI/ASME B1.20.1

Elbow 90°	Elbow 45°	Coupling	Equal Tee
Concentric Reducer	Eccentric Reducer	Elbow Reducer 90°	Street Elbow 45°
Cross Tee	End Cap	Plug	Threadolet
Tee Reducer	Bushing	Nipple	Extension Piece

FLANGES

ANSI | Black Iron Flanges



- For Use With: Air, Natural Gas, Oil, Steam, Water
- ASME B1.20.1, ASME B16.1, ASTM A126, FM Approved UL Listed

ANSI | Galvanized Iron Flanges



ASTM A123/A123M

Specification for Zinc (Hot-Dip Galvanized) Coatings on Iron and Steel flanges, covers individual pieces. Our responsibility is to ensure compliance with the specifications as long as the product has been designed and fabricated in accordance with the referenced requirements.

ASTM A182 | SS304 Stainless Steel Flanges

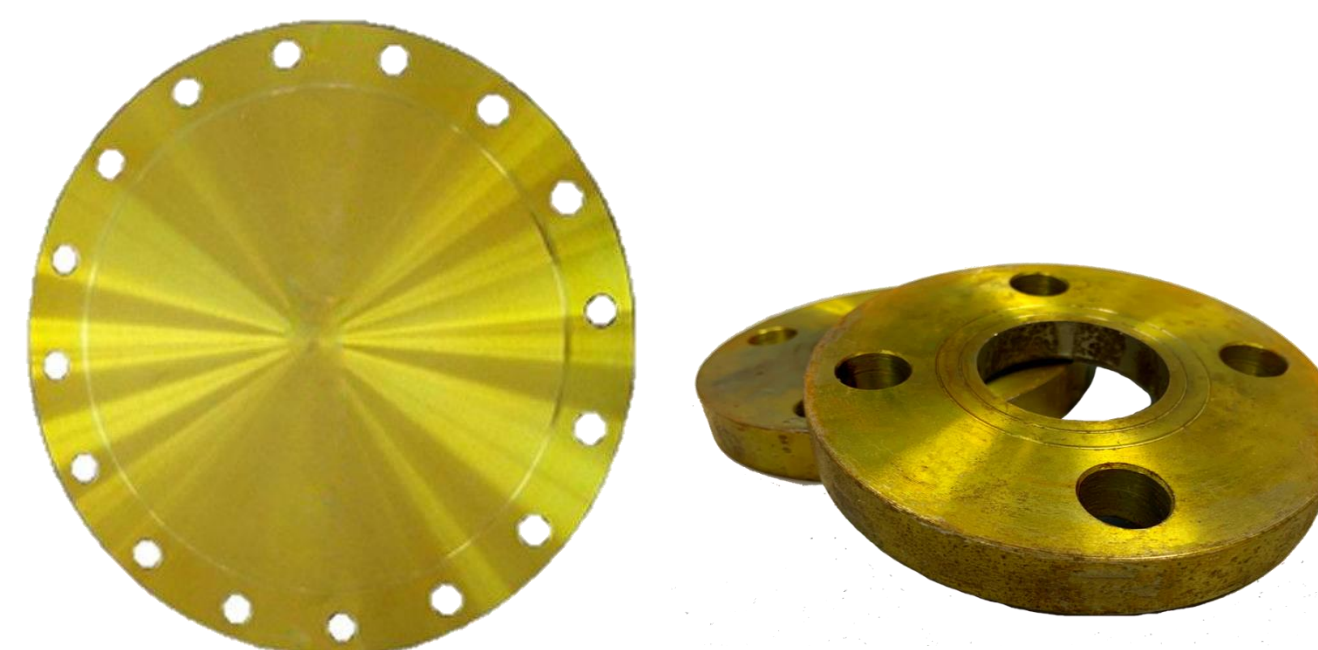


Accreditation



Specifications : ASTM A182 / A240 & ASME SA182 / SA240
Dimensions : ANSI/ASME B16.5, B 16.47 Series A & B, B16.48, BS4504, BS 10, EN-1092, DIN, etc.
Standard : ANSI Flanges, ASME Flanges, BS Flanges, DIN Flanges, EN Flanges, etc.
Size : 1/2" (15 NB) to 48" (1200NB)
Class / Pressure : 150#, 300#, 600#, 900#, 1500#, 2500#, PN6, PN10, PN16, PN25, PN40, PN64

JIS | B 2220 Steel Flanges



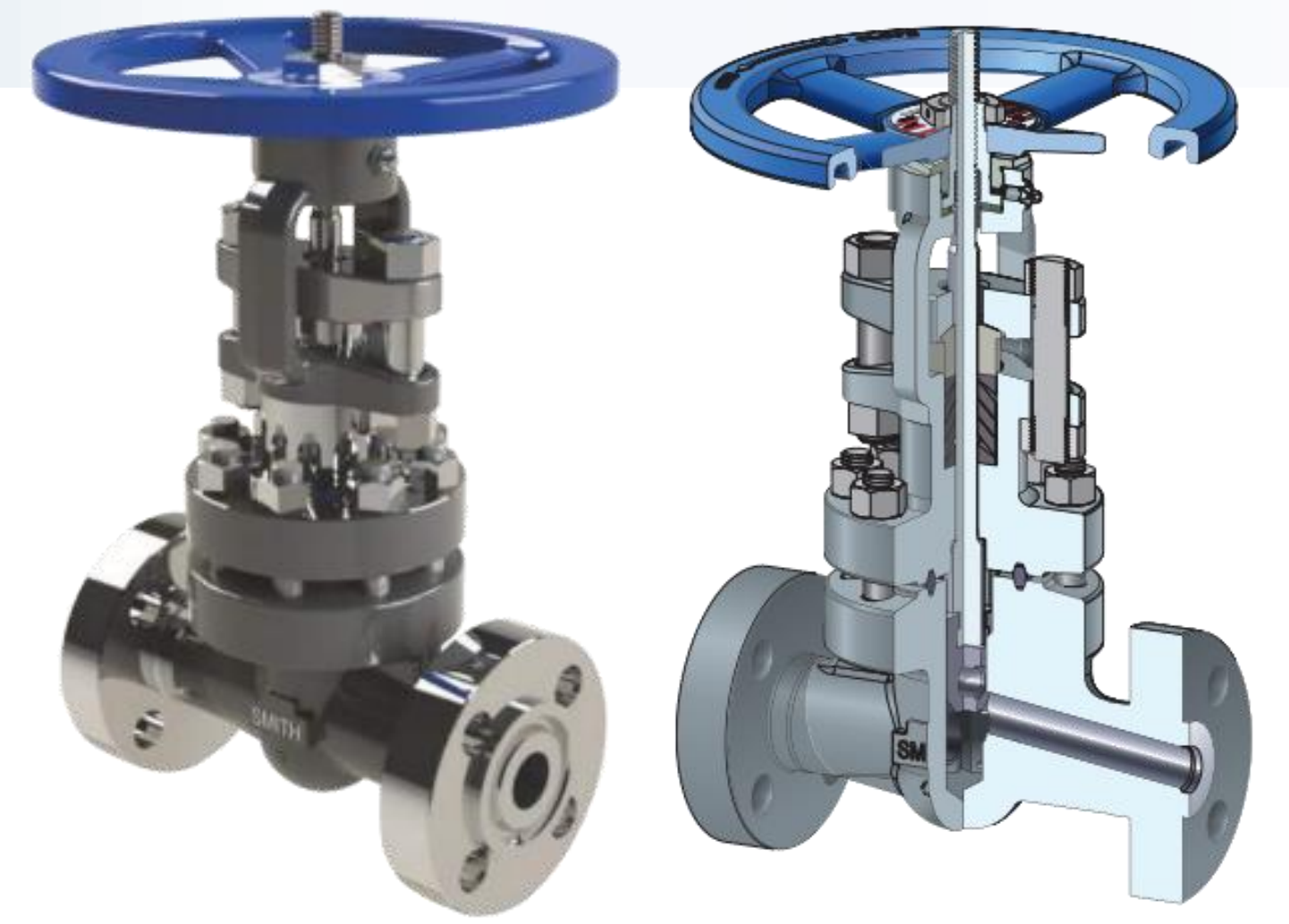
ASME B16.5 JIS B 2220 10K Flanges Size Chart	1/2" (15 NB) to 48" (1200NB) DN10~DN5000
JIS B 2220 10K Flanges Standards	ANSI/ASME B16.5, B16.47 Series A & B, B16.48, BS4504, BS 10, EN-1092, DIN, ASME Flanges, ASME Flanges, BS Flanges, DIN Flanges, EN Flanges, GOST Flange, ASME/ASME B16.5/16.36/16.47A/16.47B, MSS S44, ISO70051, JISB2220, BS1560-3.1, API7S-15, API7S-43, API605, EN1092



SMITH VALVE
The Solid Collection



The Longest Lasting Line of Integrally Flanged, Round Bolted RTJ Bonnet, Full Bore, Gate, Globe & Check Valves



EXTENSIVE MATERIAL RANGE

SMITH offers a full-range of body materials including carbon steel, chrome alloy steel, many grades of stainless steel, and many types of high alloy materials. In addition, trim materials matching all API Trim Numbers (see API 602) are available as well as virtually any other specialty trims or combinations. Packing material options are also available when standard, low emission Grafoil® packing material is not desired.

EASY MAINTENANCE

The round bolted bonnet design makes for easy in line maintenance. The RTJ gasket is a standard size and easily obtainable from multiple sources. There are no special tools required and the on-line IOM (Installation, Operation and Maintenance) provides all the required torque information for reassembly.



GATE VALVE AND GLOBE VALVE

Smith Gate Forged Valves and Standard Globe Valves feature an outside stem and yoke (OS&Y), are available in Class 150-2500, and have conventional or full ports with either threaded, socket weld, butt weld or RF ends. All are manufactured in accordance with API 602 and ASME B16.34 standards.

WAFER CHECK VALVE



uses a swinging disc to allow or block flow. Their design allows them to be fitted in extremely tight spaces – where the flanged check valve can not be used. The wafer check valves have molded bodies around the area where the disc opens up.

BALL VALVE

also known as ball plug valve, is a rotary action valve that is quarter turn. It has seats and spherical closure. It is important to have some critical details about these types of valves before using or acquiring them.



BUTTERFLY VALVE

As its name suggests, the valve looks like a butterfly. It has a rod running through the center of the disk. The rotating disk is mounted on the rod. To select the right butterfly valve, you need to understand the two major designs: the lug and the wafer styles. Other designs include double eccentric, concentric and the triple eccentric.



EPDM Seated

Teflon Seated

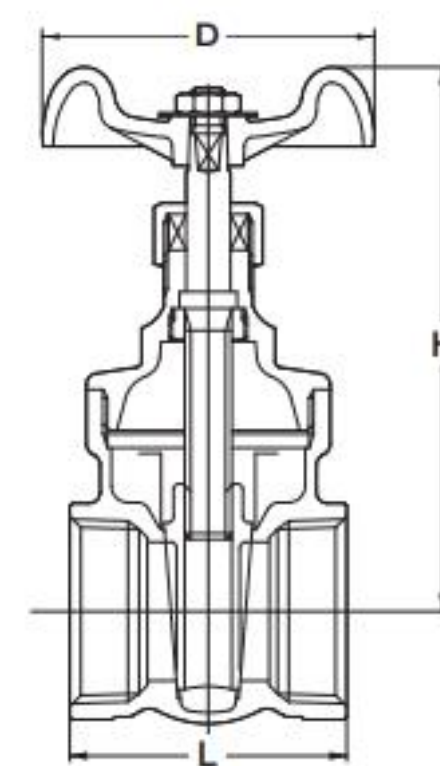
WASTE AND SEA WATER



CLASS 125 BRASS GATE VALVE

Screwed bonnet, Non-rising stem,
Threaded ends to BS21 (JIS B0203) or NPT,
or solder joint ends

W.O.G. non-shock 1.38 MPa (200 psi), Saturated steam pressure 0.86 MPa (125 psi)



Materials

Parts	Material
Body	Brass
Bonnet	Brass
Stem	Dezincification Resistant Brass
Disc	Brass
Gland packing	Aramid Fibers Graphite

⚠ Solder joint end valves should not be used in service where the temperature of the line fluid is higher than the softening point of the solder.

⚠ Do not use for flammable gas or toxic gas.

Fig. FR

• Threaded end to BS21 (JIS B0203)

Fig. AKFS

• Threaded end to ASME B1.20.1

Fig. CFS

• Solder joint ends to ASME B16.18

Dimensions

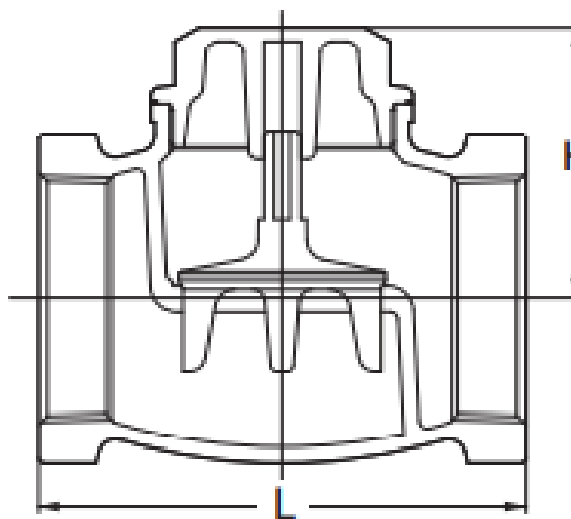
Nominal Size	inch	3/8	1/2	3/4	1	1 1/4	1 1/2	2	2 1/2	3	mm
	mm	10	15	20	25	32	40	50	65	80	
L		38	42	47	50	60	63	72	80	90	
L1 Solder			45	60	70	77	86	102			
H		73	73	87	97	117	126	154	167	200	
H Solder			75	86	97	117	126	154			
D		50	50	55	60	70	80	90	100	115	

*2 1/2 and 3 = AKFS only

CLASS 150 BRONZE LIFT CHECK VALVE

Screwed cap, Lift type disc
Threaded ends to BS21 (JIS B0203) or NPT

W.O.G. non-shock 2.07 MPa (300 psi), Saturated steam pressure 1.03 MPa (150 psi)



Materials

Parts	Material
Body	Bronze
Cap	Brass/Bronze*
Disc	Bronze

*Size 2 1/2 & 3

⚠ Do not use for flammable gas or toxic gas.

Fig. F

• Threaded end to BS21 (JIS B0203)

Fig. AKF

• Threaded end to ASME B1.20.1

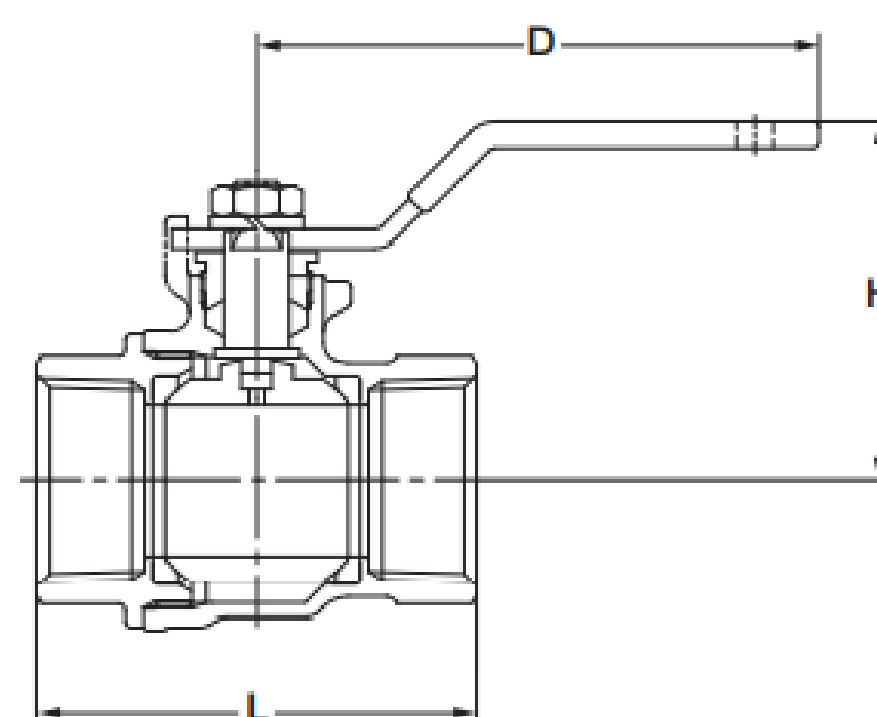
Dimensions

Nominal Size	inch	3/8	1/2	3/4	1	1 1/4	1 1/2	2	2 1/2	3	mm
	mm	10	15	20	25	32	40	50	65	80	
L		44	53	65	77	85	100	119	139	158	
H		26	28	34	42	50	56	67	79	91	

TYPE 600 BRASS BALL VALVE, FULL PORT

Screwed body cap, Blowout-proof stem,
Threaded ends to ASME B1.20.1

W.O.G. non-shock 4.14 MPa (600 psi), Saturated steam pressure 1.03 MPa (150 psi)



Materials

Parts	Material
Body	Brass
Body cap	Brass
Stem	Dezincification Resistant Brass
Ball	Brass (TEA Plating)
Ball seat	PTFE
Gland packing	PTFE

Fig. AKTAF

• Threaded end to ASME B1.20.1

Approvals
(up to 2)



Dimensions

Nominal Size	inch	1/4	3/8	1/2	3/4	1	1 1/4	1 1/2	2	mm
	mm	8	10	15	20	25	32	40	50	
L		41	42	53	60	72	82	92	105	
H		39	39	42	51	59	64	73	80	
D		82	82	82	100	130	130	150	150	



VESBO PP-R



VESBO® PP-R pipes and fittings were introduced to the Far East markets in 1994. Located in Singapore, Vesbo Asia Pte Ltd is a subsidiary of KAR Group of Companies and is the Asia Pacific marketing arm of VESBO®. It is established to introduce, market and assign distributors for Novaplast Plastik’s manufactured products in the Asia Pacific region.



High density polyethylene electrofusion waste and drainage system.

VASEN HDPE



About Vasen:

Greater Benefits

The Vasen HDPE Drainage and Sanitary Piping System leads to significant benefits in comparison to PVC, cast-iron, and other traditional type of materials. It is more flexible and has a high impact resistance to extremely hot and cold temperatures.

Greater Safety

The Vasen HDPE Drainage and Sanitary Piping System is weather-proof and coated in sleek black pigment that prevents photo-oxidation caused by UV rays. It has a smoother surface thus making it more resistant to waste build-up.

Greater Features

Not only the Vasen HDPE Drainage and Sanitary Piping System boasts the following features above, it also exhibits:

- German technology and standards
- Vasen HDPE (PE 100) is higher than most HDPE pipes (PE 80)
- Resistant to scale and abrasion
- Resistant to chemicals
- Flexible and resistant even under very low temperature
- Up to 100 C Temperature Tolerance
- Sound-proof
- Leak-proof
- Minimum life span of 50 years

Type 1008S, 40 and 50mm Stainless Steel Case Gauge

FEATURES

- ASME 3-2-3% grade B accuracy
- All-stainless steel construction
- Dry or liquid-filled versions
- Lower or center back connect
- Glass window standard
- Front flange or U-clamp available for flush mounting

Ashcroft® 40mm and 50mm all-stainless steel pressure gauges help to complete our full-line product offering of stainless steel gauges with dial sizes from 40mm to 100mm. These smaller size gauges are used whenever space limitations and atmospheric and process corrosion exist. These Ashcroft® pressure gauges utilize many of the same features as the larger dial size all stainless steel gauges including True Zero™.



40mm center back connection

50mm lower connection

CI Series Bimetal Thermometers



FEATURES

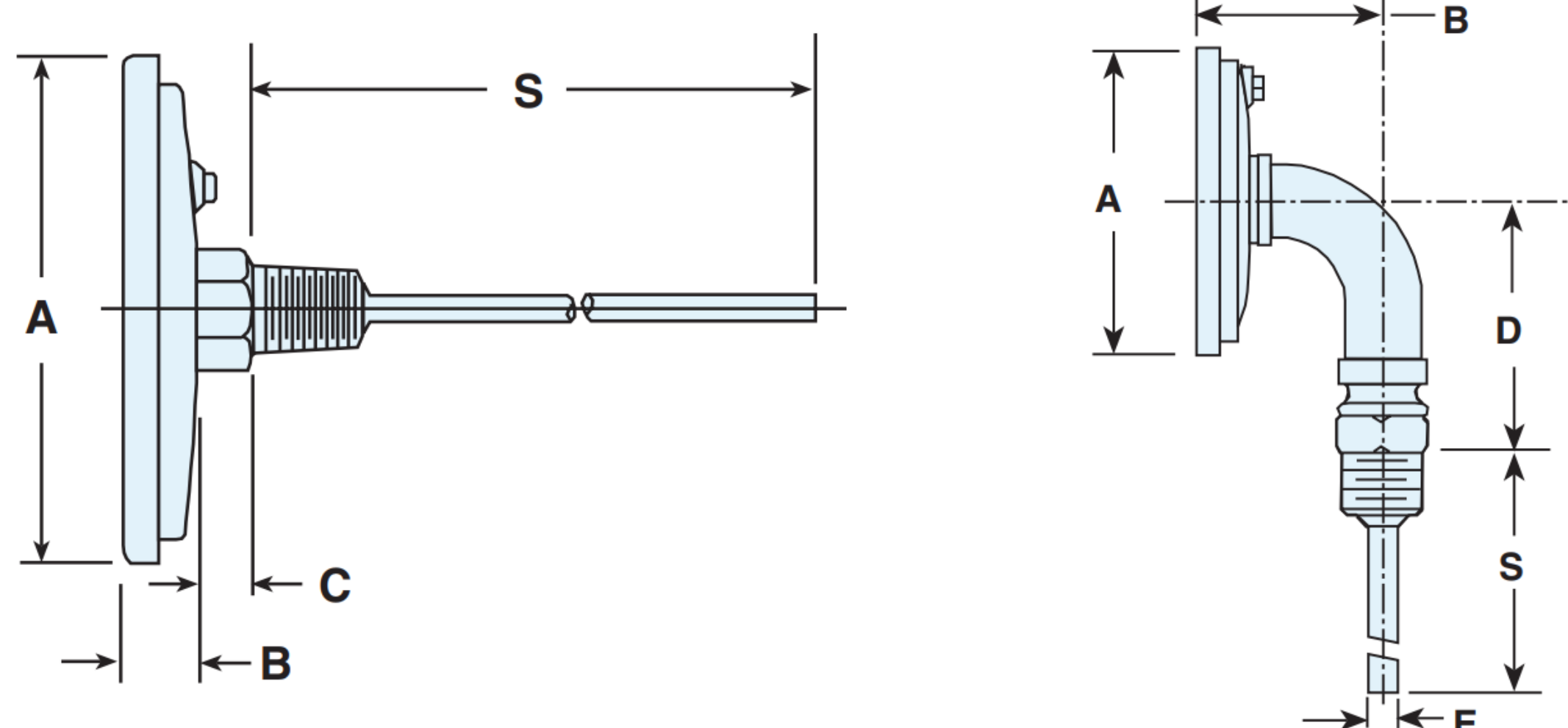
- 1% full span accuracy ASME B40.200 (ASME B40.3 Grade A)
- Maximum ambient temp. is 200°F (94°C)
- Hermetically sealed case to prevent entry of moisture, interior corrosion and coil freeze-up.
- Tamper resistant.
- Maxivision® dial allows readability from any angle without parallax error.
- Silicone coil dampening (up to 400°F) provides vibration dampening and improves response time.
- All-welded stainless steel construction
- Heavy-Duty glass lens
- Protection NEMA 4X/IP66
- Five year limited warranty



SPECIFICATIONS

- Ashcroft® Series:** CI
- Dial Sizes:** 2", 3", 5"
- Stem Length:** 2½"-24" (1)
- Case & Stem:** 304 stainless steel, hermetically sealed
- Stem Dia:** .250"
- Window:** Heavy-duty glass, plastic or shatter-proof glass optional
- Dial:** Maxivision®, black figures on white background
- Pointer:** Black
- Connection:** Plain, pointed plain, ¼ NPT, ½ NPT
- Connection Location:** Lower, Rear
- Ranges:** -80/120°F-200/1000°F
-50/50°C-100/500°C

DIMENSIONS



NOTES:

1. Figures in parenthesis () are in millimeters. All other dimensions are in inches.
2. Standard "S" dimensions are 2½, 4, 6, 9, 12, 15, 18 and 24 inches. Standard stem diameter is ¼ inch.
3. Add 1 oz. for every 2 inches of stem length.

CI Dimensions

Case Series	Dial Size	Connection Location	A	B	C	D	E	S	NPT	Hex	Weight in ounces ⁽³⁾
CI	2"	Rear (Plain)	2½/32 (53)	3/8 (10)	3/8 (8)	-	-	-(2)	-	1½/16	4½
CI	2"	Rear (Plain, pointed stem)	2½/32 (53)	3/8 (10)	5/16 (8)	-	-	-(2)	-	1½/16	4½
CI	2"	Rear (Threaded)	2½/32 (53)	3/8 (10)	3/8 (8)	-	-	-(2)	¼	1½/16	4½
CI	3"	Rear	3½/32 (80)	19/32 (15)	3/8 (8)	-	-	-(2)	½	7/8	7
CI	3"	Lower	3½/32 (80)	127/32 (47)	-	2% (67)	¼ (6)	-(2)	½	7/8	11
CI	5"	Rear	5½/32 (128)	23/32 (18)	3/8 (8)	-	-	-(2)	½	7/8	16
CI	5"	Lower	5½/32 (128)	115/16 (49)	-	3% (92)	¼ (6)	-(2)	½	7/8	26

MAJOR CLIENTS AND GALLERY



PINOLEAKPES
NO LEAK BETWEEN THE PIPES

Major Clients



MODAIR MANILA CO. LTD., INC.



MANILA WATER
CARE IN EVERY DROP



Maynilad



Avida Towers
San Lazaro



JG SUMMIT
HOLDINGS, INC.



First Balfour

THAISON
BUILDER & DEVELOPER INC.



**SAN MIGUEL
BREWERY INC.**

A subsidiary of San Miguel Corporation

**KCC
MALLS**



Shell Chemicals



**JODANS
ENGINEERING**



MDC

Makati Development Corporation

FILINVEST

Ayala Malls

ADB

ASIAN DEVELOPMENT BANK



+63 915 925 2309
+63 976 019 9919



(02) 8 208 8228 / (02) 8 404 6551



nowserving01@gmail.com
nowserving02@gmail.com



89 Anahaw St., Brgy. Veterans Village
Project 7, Quezon City



<https://pinoleakpes.wixsite.com/pinoleakpes>

