

ACEJET DRY WATER METERS

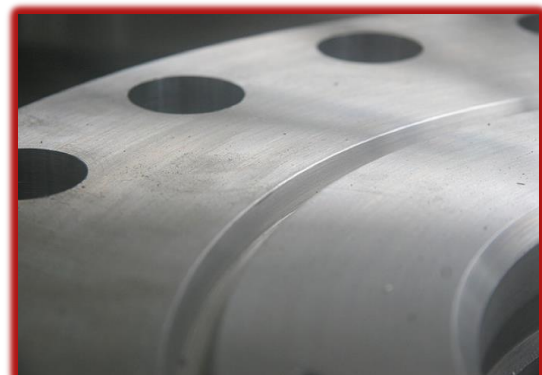
High Quality materials guaranteed against corrosion

Characteristics:

- Dry dial
- Magnetic drive, resistance to exterior Magnetic interference
- Vacuum sealed register ensures the dial keep Free from fog and give clear reading at all time
- Plain reading with both digital roller and pointer display
- Solid and robust design, long life service
- Wide, mensuration range, high flow accuracy
- Steady curve characteristic
- Universal use

Construction:

- Selected high quality materials
- Universal interchangeable measuring insert
- Built-in strainer protects against Block caused my dirt
- Diameter range 15 – 50mm
- Vacuum register



ACEJET DRY WATER METERS

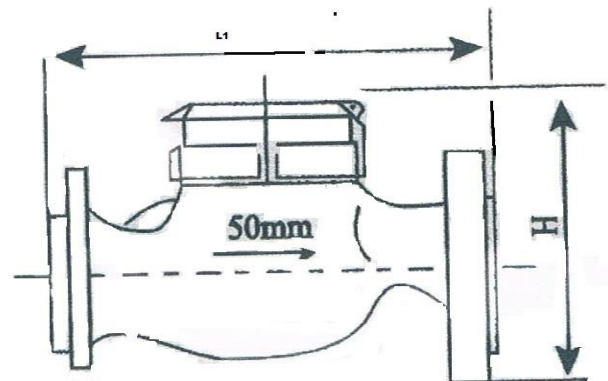
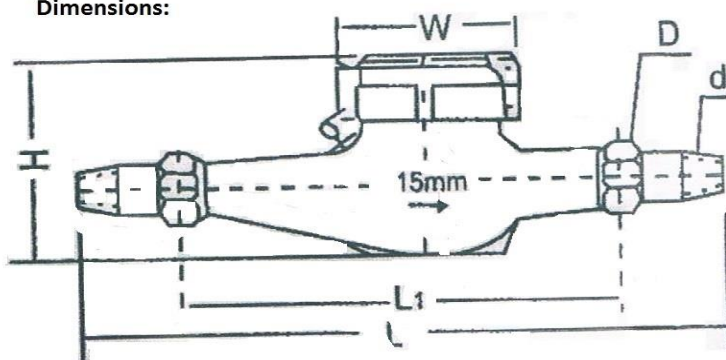
High Quality materials guaranteed against corrosion

Working Condition:

- Water temperatures: < 40°C Water pressure: <1 Mpa
- Technical Data Below conform to ISO Standard

Nominal Diamter	Nominal flowrate	Transitional flowrate		Min. flowrate		Max. Reading	Min. reading
mm	m ³ /h	m ³ /h				m ³	
		A	B	A	B		
15	1.5	0.15	0.12	0.06	0.03	9999.9999	0.0001
20	2.5	0.25	0.20	0.10	0.05		
25	3.5	0.35	0.28	0.14	0.07		
40	10	1.00	0.80	0.40	0.20	9999.9999	0.001
50	15	4.5	3.00	1.200	0.45		
80	40	12	8.0	3.2	1.2	999999.99	0.01
100	60	18	12	4.8	1.8		
150	150	45	30	12	4.5	9999999.9	0.1
200	250	75	50	20	7.5		
250	400	80		12		9999999.9	0.1
300	600	120		18			

Dimensions:



Size	Length	Length	Width	Height	Connecting thread		Weight
mm	L	L1	W	H	D	d	kg
15	260	165	98	106	G3/4B	R1/2	1.6
20	299	195	98	110	G1B	R3/4	1.9
25	345	255	104	115	G1 1/4B	R1/2	2.3
40	375	245	125	155	G2B	R1 1/2	5.1
50	—	200	175	247	Flange Standard GB2555-81		12
80	—	225	200	190			15
100	—	250	225	266			19
150	—	300	285	300			30
200	—	350	340	380			42

ACEJET VERTICAL WATER METERS

High Quality materials guaranteed against corrosion

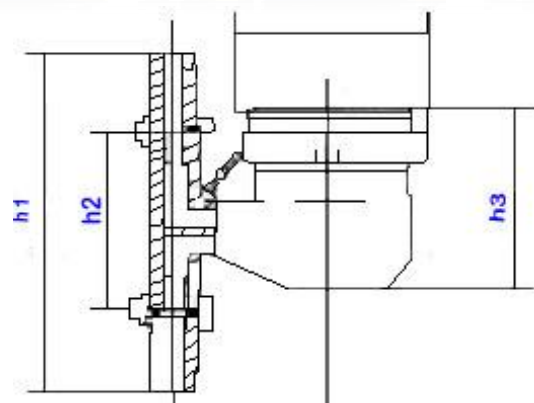
LXZ series water meter included model C and Model E, both of them are used to measure The total water consumption flowing in through Pipeline. The rotation of the turbine is driven With gear on the register.

Model C water meter shows the total water Consumption on the dial with eight needles, And model E with 5-digit wheels and three Needles, but both of them are suitable for Measuring the total water consumption of Resident unit or small enterprise, and have The advantage of metering accuracy.

The data and Specification conform to the Standards of class B of ISO4064

SPECIFICATIONS:

1. Water Temperature: $<40^{\circ}\text{C}>$
2. Water Pressure $< 1 \text{ Mpa}$
3. LXSL – 15C ~ 20C, LXSL – 15E ~ 20E: the error Is +2% from the transitional flow to max. Flow, and error is 5% from min. flow To but excluding transitional flow.



4.Flow:

Size (mm)	Nominal	Transitional		Min.Flow		Starting Flow		Max.	Min.
	flow (Qn)	Flow	(Qt)	(Qmin)		(Qs)		reading	reading
	m3/h			m3/h				m3	
		A	B	A	B	A	B		
15	1.5	.15	.12	.045	.03	.014	.010	9999.9999	0.0001
20	2.5	.25	.20	.075	.05	.019	.014		

5. Size

mm	H1	H2	H3	L1	L2
15	194	96	100	97	97
20	205	100	101	97	90