



RESILIENT SEATED GATE VALVE (OS&Y - RISING STEM)

Size: DN50 - DN1000 (2" - 40")
 Working Pressure: PN16 (200PSI)
 Working Temp: -10°C to 230°C
 Body: A536 (Ductile Iron)
 Stem: Carbon Steel
 Flange Standard: ANSI 150#



RESILIENT SEATED GATE VALVE (NON-RISING STEM)

Size: DN50 - DN1000 (2" - 40")
 Working Pressure: PN16 (200PSI)
 Working Temp: -10°C to 230°C
 Body: ASTM A536 (Ductile Iron)
 Disc: A536 + EPDM
 Flange Standard: ANSI 150#



DUAL DISK WAFER CHECK VALVE

Size: DN50 - DN600 (2" - 24")
 Working Pressure: PN16 (200PSI)
 Working Temp: -10°C to 230°C
 Body: ASTM A536 (Ductile Iron)
 Disc: ASTM A536 (Ductile Iron)



SWING CHECK VALVE

Size: DN50 - DN300 (2" - 12")
 Working Pressure: PN16 (200PSI)
 Working Temp: -10°C to 230°C
 Body: ASTM A536 (Ductile Iron)
 Flange Standard: ANSI 150#



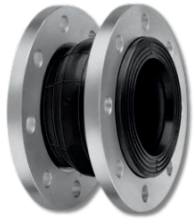
WYE - STRAINER

Size: DN50 - DN300 (2" - 12")
 Working Pressure: PN16 (200PSI)
 Working Temp: -10°C to 230°C
 Body: ASTM A536 (Ductile Iron)
 Mesh: SS304 (CF8)
 Flange Standard: ANSI 150#



WAFER BUTTERFLY VALVE - LOCK LEVER

Size: DN50 - DN1200 (2" - 48")
 Working Pressure: PN16 (200PSI)
 Working Temp: -10°C to 230°C
 Body: ASTM A536 (Ductile Iron)
 Seat: EPDM
 Flange Standard: ANSI 150# / JIS 10K / PN16



SINGLE SPHERE FLEXIBLE JOINT CONNECTION

Size: DN32 - DN600 (1 - 1/4" - 12")

Working Pressure: PN16 (200PSI)

Working Temp: -15°C to 115°C

Sphere: EPDM

Flange: CS Coated with Zinc

Flange Standard: ANSI 150#



DOUBLE SPHERE FLEXIBLE JOINT CONNECTION

Size: DN32 - DN350 (1 - 1/4" - 12")

Working Pressure: PN16 (200PSI)

Working Temp: -15°C to 115°C

Sphere: EPDM

Flange: CS Coated with Zinc

Flange Standard: ANSI 150#



UNIVERSAL SLEEVE TYPE COUPLING

Size: DN40 - DN800 (1-1/2" - 32")

Working Pressure: PN16 (200PSI)

Working Temp: -10°C to 230°C

Sleeve: ASTM A536 (Ductile Iron)

Gasket: EPDM

Bolts: Galvanized - Full Thread