



HYFLO



HYFLO PROTECTION VALVES-US



HYFLO Fire Protection Valves - US



OS & Y GATE VALVE

Resilient Seated Flange Type 300psi



Valve Standard

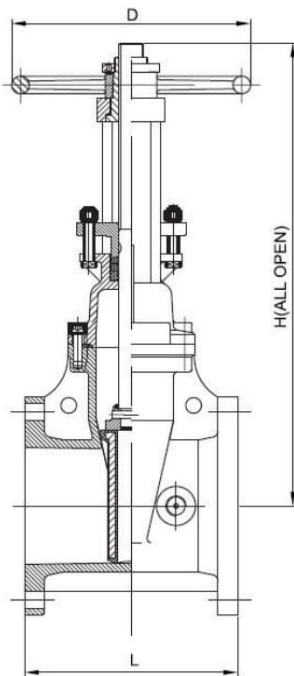
Conforms to AWWA C515 / BS5163

Working pressure

21 Bar/300PSI

Flanged Ends

ANSI B16.1 Class 300



Materials List

Part Name	Material	ASTM Specification
Body	Ductile Iron	A536 65-45-12
Wedge	Ductile Iron EPDM Coated	
Wedge Nut	Stainless Steel	AISI304
Stem	Stainless Steel	AISI304/302
Bonnet	Ductile Iron	A536 65-45-12
Gasket	EPDM	Commercial
Packing	Graphite	Non-asbestos
Stem Nut	Bronze	ASTM B62
Handwheel	Ductile Iron	A536 65-45-12

Dimensions(mm/inch):

SIZE	mm	50	65	80	100	125	150	200	250	300
	inch	2	2 ¹ / ₂	3	4	5	6	8	10	12
L	mm	178	191	203	229	254	267	292	330	356
	inch	7.00	7.50	8.00	9.00	10.00	10.50	11.50	13.00	14.00
H	mm	418	418	488	538	654	740	935	1126	1316
	inch	16.46	16.46	19.21	21.18	25.75	29.13	36.81	44.33	51.81
D	mm	183	183	253	253	306	306	355	445	445
	inch	7.20	7.20	9.96	9.96	12.05	12.05	13.98	17.52	17.52



HYFLO Fire Protection Valves - US



CHECK VALVE

Swing Type 300 psi



Valve Standard

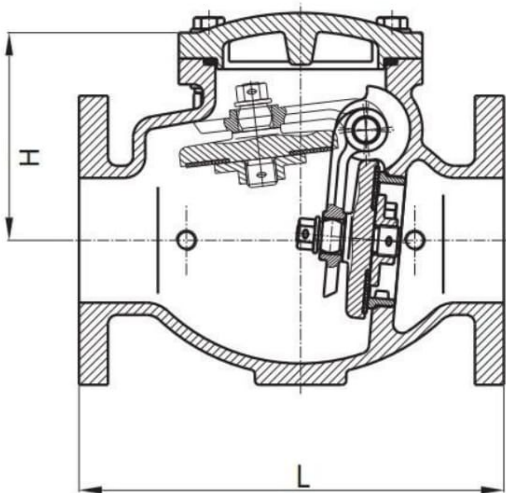
Conforms to AWWA C508, Clear Waterway

Working pressure

300PSI

Flanged Ends

ANSI B16.1 Class 300



Materials List

Part Name	Material	Specification
Body	Ductile Iron	A536 65-45-12
Cover	Ductile Iron	A536 65-45-12
Clapper	Ductile Iron	A536 65-45-12
Clapper Arm	Ductile Iron	A536 65-45-12
Seat Ring	EPDM	
Hinge Pin	Stainless Steel	AISI 304
Retainer Washer	Bronze	ASTM B62

Dimensions(mm/inch)

SIZE	mm	50	65	80	100	125	150	200	250	300
	inch		2	2½	3	4	5	6	8	10
L	mm	203	254	279	330	356	406	495	559	660
	inch	8	10	11	13	14	16	19.5	22	26
H	mm	122	133	136.5	162.5	296	298.5	357	410	463
	inch	4.80	5.23	5.37	6.40	11.65	11.75	14.06	16.14	18.31



HYFLO Fire Protection Valves - US



BUTTERFLY VALVE WAFER TYPE

300 psi



Specifications :

Certification :

- Valves size 2", 2.5", 3", 4", 5", 6", 8", 10", 12".
- UL listed for all sizes.
- FM approved for size 2", 2.5", 3", 4", 5", 6".

Features :

- Vulcanized disc design for bubble-tight shutoff at 300PSI.
- Flag type position indicator.
- Low torque operation, high cycle life.
- Light weight.
- Stem has a multiple spline key structure. This transfers higher torque loads and provides exceptional reliability.
- With built-in supervisory switch.
- Top flange to ISO 5211/1.
- Flanges to ANSI B16.1 Class125, EN1092-2 PN10/16. (Other types available upon request)
- Fusion bonded epoxy coated interior and exterior to AWWA C550 standard.
- Working Pressure 300PSI. (available for 250PSI and 200PSI)
- Working Temperature -10°C to 82°C.

Installation Sheet for Gear Operator with Tamper Switch

Butterfly valves are provided with internal supervisory position switches. The tamper switch operates by a cam connected to the valve stem. The switch will change position and close within two (2) full turns of the hand wheel from the fully open position.

Switch #1:

For connection to the supervisory circuit

Normally closed: 2 Yellow

Normally open: 2 Red

Common: 2 White

Switch #2:

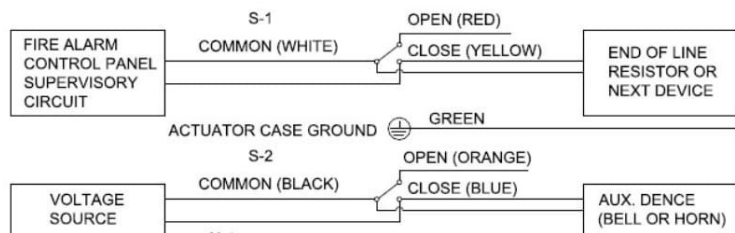
Auxiliary switch connected per authority

Normally closed: 1 Blue

Normally open: 1 Orange

Common: 1 Black

Ground Lead: 1 Green



Notes:

1. Item no. VSION 021 C2.
2. Rated: 10A 125-250VAC.



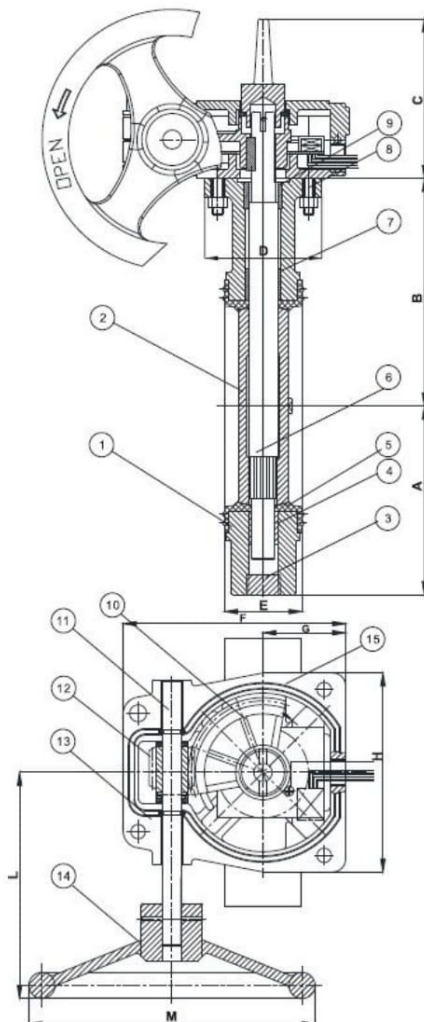
HYFLO Fire Protection Valves - US



BUTTERFLY VALVE WAFER TYPE

300 psi

Schematic



Components & Materials

1	Body	Ductile Iron A536 65-45-12
2	Disc	Ductile Iron A536 65-45-12
3	Plug	Carbon Steel/Chrome Plated
4	Lower Shaft Sleeve	Brass C67400
5	Seat	Rubber EPDM
6	Stem	Stainless Steel AISI 316
7	Upper Stem	Stainless Steel AISI 316
8	Bolts & Nuts	Carbon Steel/Zinc Plated
9	Upper Shaft Sleeve	Brass C67400
10	Worm Gear	Bronze C62300
11	Worm Shaft	Stainless Steel AISI 316
12	Worm	Stainless Steel AISI 316
13	Gasket	Rubber EPDM
14	Handwheel	Cast Iron A126 ClassB
15	Gear Box	Cast Iron A126 ClassB

Dimensions (mm/inch)

Size	A	B	D	E	C	F	G	H	L	M
2"	110 4.33	74 2.91	90 3.54	43 1.69	120 4.72	170 6.69	65 2.56	155 6.10	150 5.91	200 7.87
2.5"	118 4.65	85 3.35	90 3.54	46 1.81	120 4.72	170 6.69	65 2.56	155 6.10	150 5.91	200 7.87
3"	130 5.12	95 3.74	90 3.54	46 1.81	120 4.72	170 6.69	65 2.56	155 6.10	150 5.91	200 7.87
4"	145 5.71	115 4.53	90 3.54	52 2.05	120 4.72	170 6.69	65 2.56	155 6.10	150 5.91	200 7.87
5"	160 6.30	130 5.12	90 3.54	56 2.20	120 4.72	170 6.69	65 2.56	155 6.10	150 5.91	200 7.87
6"	175 6.89	145 5.71	90 3.54	56 2.20	120 4.72	170 6.69	65 2.56	155 6.10	150 5.91	200 7.87
8"	200 7.87	170 6.69	125 4.92	60 2.36	160 6.30	225 8.86	85 3.35	206 8.11	200 7.87	300 11.81
10"	250 9.84	208 8.19	125 4.92	68.5 2.70	160 6.30	225 8.86	85 3.35	206 8.11	200 7.87	300 11.81
12"	275 10.83	238 9.37	125 4.92	79.5 3.13	160 6.30	225 8.86	85 3.35	206 8.11	200 7.87	300 11.81

Internal Structure of Gear operator





HYFLO Fire Protection Valves - US

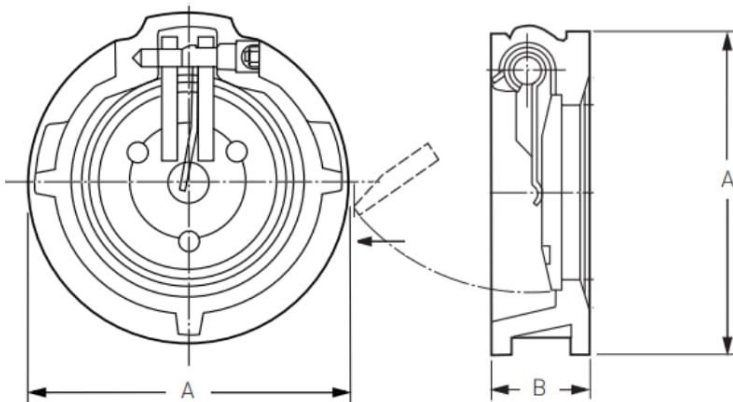
WAFER CHECK VALVE Wafer Swing Check Valves



HFY-300-WSCV

MATERIAL SPECIFICATION

Part No.	Part	Standard Specification	Options
1	Valve Body	ASTM A536, 65-45-12	
2	Disc	AISI 304	AISI 316, AL-Bronze UNC 95400
3	Screw	Carbon Steel	AISI 304, AISI 316
4	Gasket	EPDM	NBR
5	Stem	AISI 420	AISI 304, AISI 316, AISI 416
6	Gasket	PTFE	
7	Spring	AISI 304	AISI 316
8	Lifting Hook	Carbon Steel Zinc Plated	



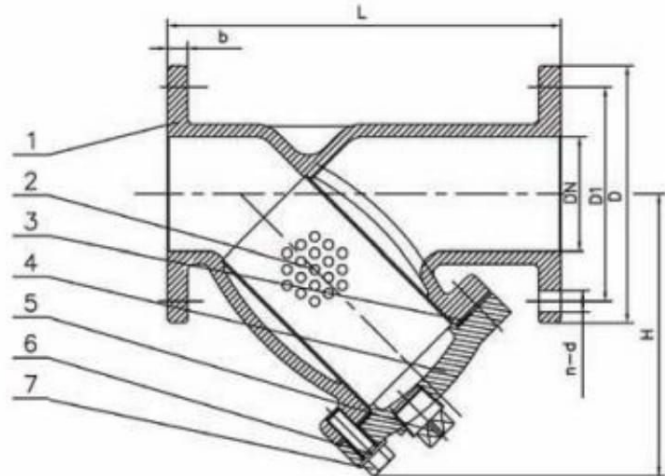
- Connection Ends: ASME B16.1 CL 125, ASME B16.5 CL 150
- Working Pressure: 300PSI
200PSI and 250PSI available upon request
- Temperature Range: 0°C- 80°C
- Coating: Fusion Bonded Epoxy Coating in accordance with ANSI/AWWA C550

SIZE	2"	2-1/2"	3"	4"	5"	6"	8"	10"	12"
mm	50	65	80	100	125	150	200	250	300
A	100	125	130	162	194	215	272	336	382
B	45	47	65	70	75	95	108	143	184

Flanged Y-Type Strainer (V4),



V4



MATERIAL SPECIFICATION

Part No.	Part	Standard Specification	Options
1	Valve Body	ASTM A536 65-45-12	
2	Screen	AISI 304 (Perforated)	AISI 304, AISI 316 (Perforated, Knitted, Double Screen)
3	Gasket	Graphite + Acanthopore Plate	EPDM
4	Bonnet	ASTM A536 65-45-12	
5	Plug	Malleable Iron Galvanized	Bronze ASTM B584
6	Bolt	Carbon Steel Zinc Plated	AISI 304, AISI 316
7	Flat Washer	Carbon Steel Zinc Plated	AISI 304, AISI 316

- Connection Ends: Flange to ASME B16.1 CL 125
- Working Pressure: 300PSI
200PSI and 250PSI available upon request
- Temperature Range: -10°C- 200°C graphite gasket
0°C- 80°C rubber gasket
- Coating: Fusion Bonded Epoxy Coating in accordance with ANSI/AWWA C550

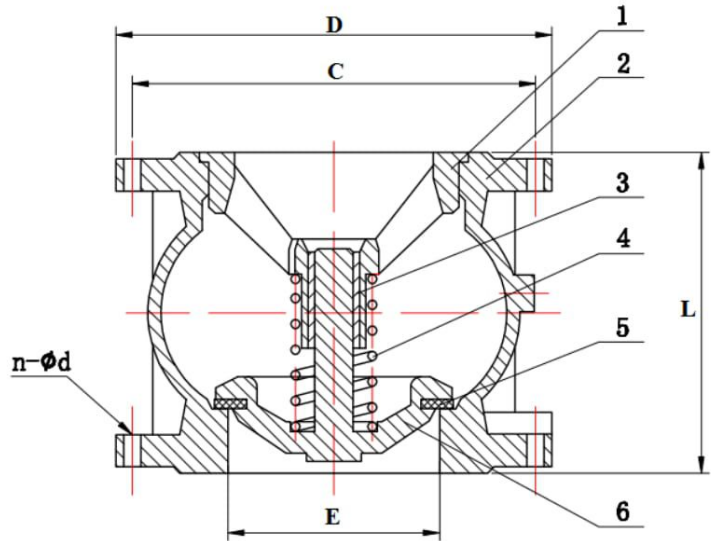
DN		Dimensions(mm)					
Inch	mm	L	D	D1	b	n-Φd	H
2"	50	200	152	120.5	16	4-Φ19.1	155
2.5"	65	254	178	139.5	17.5	4-Φ19.1	165
3"	80	257	191	152.5	19	4-Φ19.1	180
4"	100	308	229	190.5	24	8-Φ19.1	229
5"	125	397	254	216	24	8-Φ22.2	285
6"	150	470	279	241.5	25.5	8-Φ22.2	311
8"	200	549	343	298.5	28.5	8-Φ22.2	394
10"	250	654	406	362	30.5	12-Φ25.4	487
12"	300	759	483	432	32	12-Φ25.4	547

SILENT CHECK VALVE

Flange Type ANSI Class 150
 ASME B16.1 B16.42
 Flange according to ANSI Class 150



Silent Check Valve has a spring- loaded poppet that allows the valve to close before flow reversal occurs, resulting in a silent, non-slam closure. It is a truly silent check valve. For ease of installation, the valve can be installed in vertical or horizontal positions with flow up or flow down.



PARTS & DIMENSIONS

Part No.	PART	MATERIAL	SPECIFICATIONS
1	Disc Guide	Stainless Steel	Ductile Iron Body Stainless Steel Disc Stainless Steel Strainer ASME B16.1 ANSI Class 150 Working Temperature 80 deg C
2	Body	Ductile Iron	
3	Guiding Stem	Ductile Iron	
4	Spring	Stainless Steel	
5	Seat	Stainless Steel	
6	Disc	Ductile Iron	

Foot Valve Dimension

SIZE	2"	2-1/2"	3"	4"	5"	6"	8"	10"	12"
D	165	185	200	230	252	285	340	406	483
C	120.5	139.5	152.5	190.5	216	241.5	298.5	362	432
L	100	120	140	170	200	230	301	370	410
E	50	65	80	101	127	145	194	245	300
n-Ød	4-20	4-20	8-20	8-20	8-22	8-22	8-22	12-25	12-25

FOOT VALVE

Spring Loaded
 Silent Type Check Valve
 Ductile Iron Flange Type

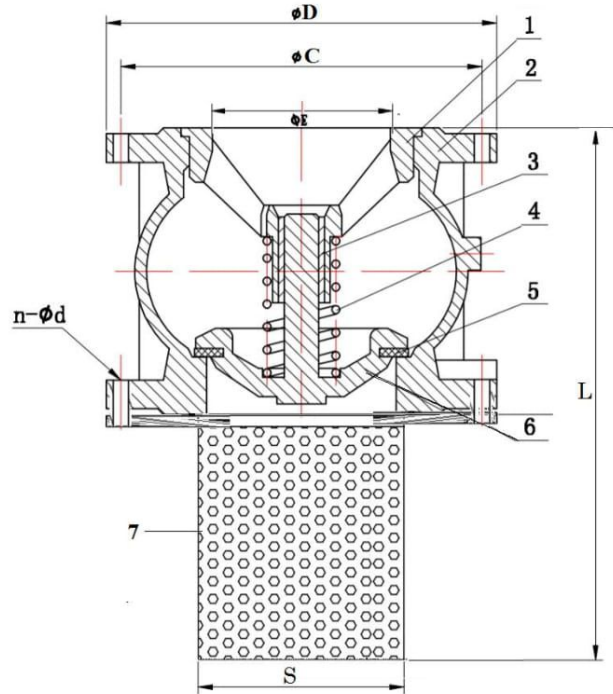


HYFLO FIRE PROTECTION VALVES



Valve Design in accordance to: ASME B16.1 B16.42

Flange according to ANSI Class 150
 Inspection & Testing: EN12516 EN12266



PARTS & DIMENSIONS

Part No.	PART	MATERIAL	SPECIFICATIONS
1	Disc Guide	Stainless Steel	Body Materials: Ductile Iron Body Stainless Steel Disc Stainless Steel Strainer ASME B16.1 ANSI Class 150 Working Temperature 80 deg C
2	Body	Ductile Iron	
3	Guiding Stem	Ductile Iron	
4	Spring	Stainless Steel	
5	Seat	Stainless Steel	
6	Disc	Ductile Iron	
7	Strainer	Stainless Steel	

Foot Valve Dimension

SIZE	2"	2-1/2"	3"	4"	5"	6"	8"	10"	12"
D	156	176	192	212	242	275	332	385	445
L	180	220	260	320	375	430	351	670	760
S	111	131	148	168	198	222	278	329	384



HYFLO FIRE PROTECTION VALVES



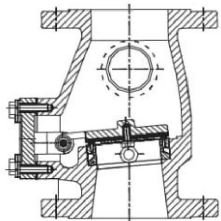
FIRE ALARM CHECK VALVE



FIRE ALARM CHECK VALVE

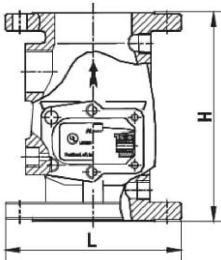
- Certificate: UL Listed / FM Approved
- Standard: ANSI / UL 193
- Connection: Flanged as ANSI B16.1 / EN 1092-2
- Installation: Vertical
- Test: Factory hydro test 350 psi (2.4 MPa)
- Temperature: 4°C to 70°C
- W. pressure: 175 / 300 psi (1.21 / 2.07 MPa)
- Surface: FBE coating as AWWA C550



Main parts and material

Body	Ductile iron as A536, 65-45-12	Bonnet	Ductile iron as A536, 65-45-12
Disc	Ductile iron as A536, 65-45-12 + EPDM	Stem	SS304
Seat	Bronze as B62 C83600	Accessories	Standard trim accessories, Retard Chamber, Alarm pressure switch, Water motor gong, etc.



Available size

Size			Dimension (mm)		
Inch	DN	mm	L	H	n x Φd
3"	80	88.9	190	257	8 x Φ19
4"	100	114.3	229	270	8 x Φ19
6"	150	168.3	279	346	8 x Φ23
8"	200	219.1	340	432	12 x Φ23





HYFLO FIRE PROTECTION VALVES



ALARM CHECK VALVE ASSEMBLY DIAGRAM

